



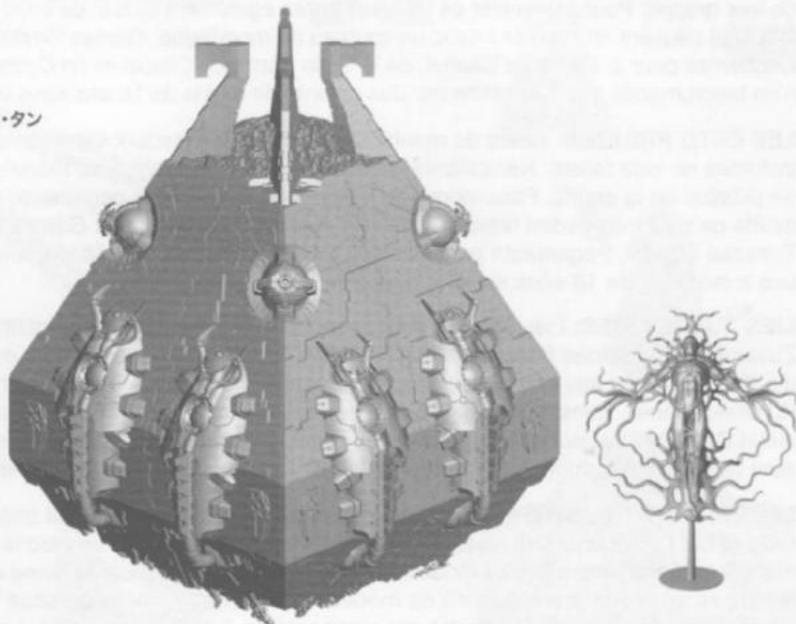
Free Downloads of Build Instructions,
Assembly Booklets & How To Guides

BuildInstructions.com

WARHAMMER 40,000 NECRONS®

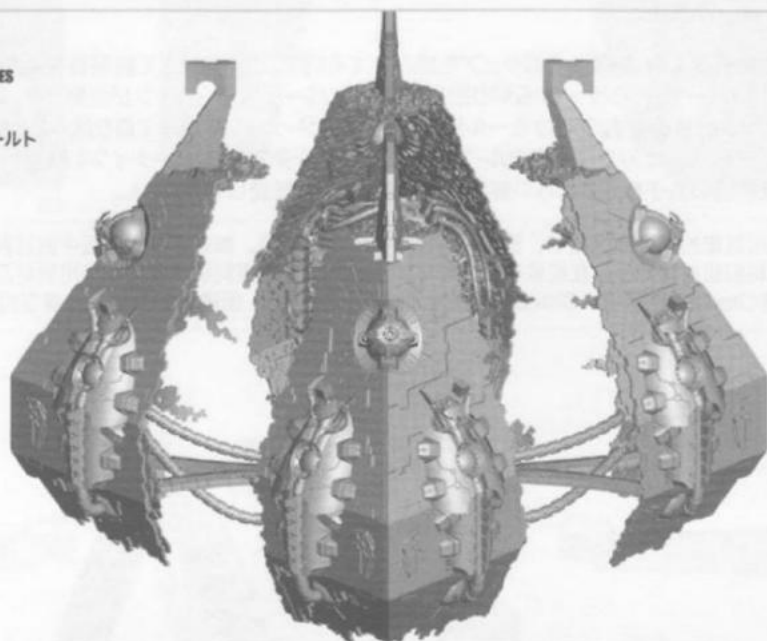


NECRON® OBELISK™ & TRANSCENDENT C'TAN
 OBÉLISQUE & C'TAN TRANSCENDANT DES NÉCRONS
 OBELISCO NECRÓN Y C'TAN TRANSCENDENTE
 OBELESCO & TRANZENDIERTER C'TAN DER NECRONS
 OBELISCO DEI NECRON E C'TAN TRANSCENDENTE
 ネクロン オベリスク&トランセンデント・ク・タン



Follow stages 1 to 12
 Suivre les étapes 1 à 12
 Sigue los pasos 1 a 12
 Schritte 1 bis 12
 Segui le fasi dalla 1 alla 12
 ステップ1から12に従う

NECRON® TESSERAFT VAULT™
 CRYPTA TESSERAFT DES NECRONS
 CRIPTA TESSERÁCTICA DE LOS NECRONES
 TESSERAFT-VERLIES DER NECRONS
 CRIPTA TESSERATTICA DEI NECRON
 ネクロン テッセラクト・ヴォールト



Follow stages 13 to 24
 Suivre les étapes 13 à 24
 Sigue los pasos 13 a 24
 Schritte 13 bis 24
 Segui le fasi dalla 13 alla 24
 ステップ13から24に従う

EXPLANATION OF SYMBOLS • EXPLICATION DES SYMBOLES • EXPLICACIÓN DE SÍMBOLOS ERLÄUTERUNG DER SYMBOLE • LEGENDA DEI SIMBOLI • アイコンの説明 • 符号说明



SPECIAL INSTRUCTION - PLEASE READ
 INSTRUCCIONS ESPECIALS - LIRE ATTENTIVEMENT
 INSTRUCCIÓN ESPECIAL - POR FAVOR, LÉALA
 BESONDERE ANWEISUNG - BITTE LESEN
 ISTRUZIONI SPECIALI - LEGGI ATTENTAMENTE
 特記事項 - 必ず読んでください
 特殊说明 - 请阅读



FINISHED ASSEMBLY
 ASSEMBLAGE TERMINÉ
 MONTAJE FINALIZADO
 FERTIGER ZUSAMMENBAU
 ASSEMBLAGGIO COMPLETO
 完成例
 组装的成品



ALTERNATE ANGLE
 VUE ALTERNATIVE
 ÁNGULO INVERSO
 ALTERNATIVE ANSICHT
 VISUALE ALTERNATIVA
 別の角度から見た図
 其他角度



DO NOT GLUE THE COMPONENTS
 NE PAS COLLER LES ÉLÉMENTS
 NO PEGAR LOS COMPONENTES
 BITTE DIE TEILE NICHT KLEBEN
 NON INCOLLARE I COMPONENTI
 パーツを接着しないこと
 请勿粘貼部件



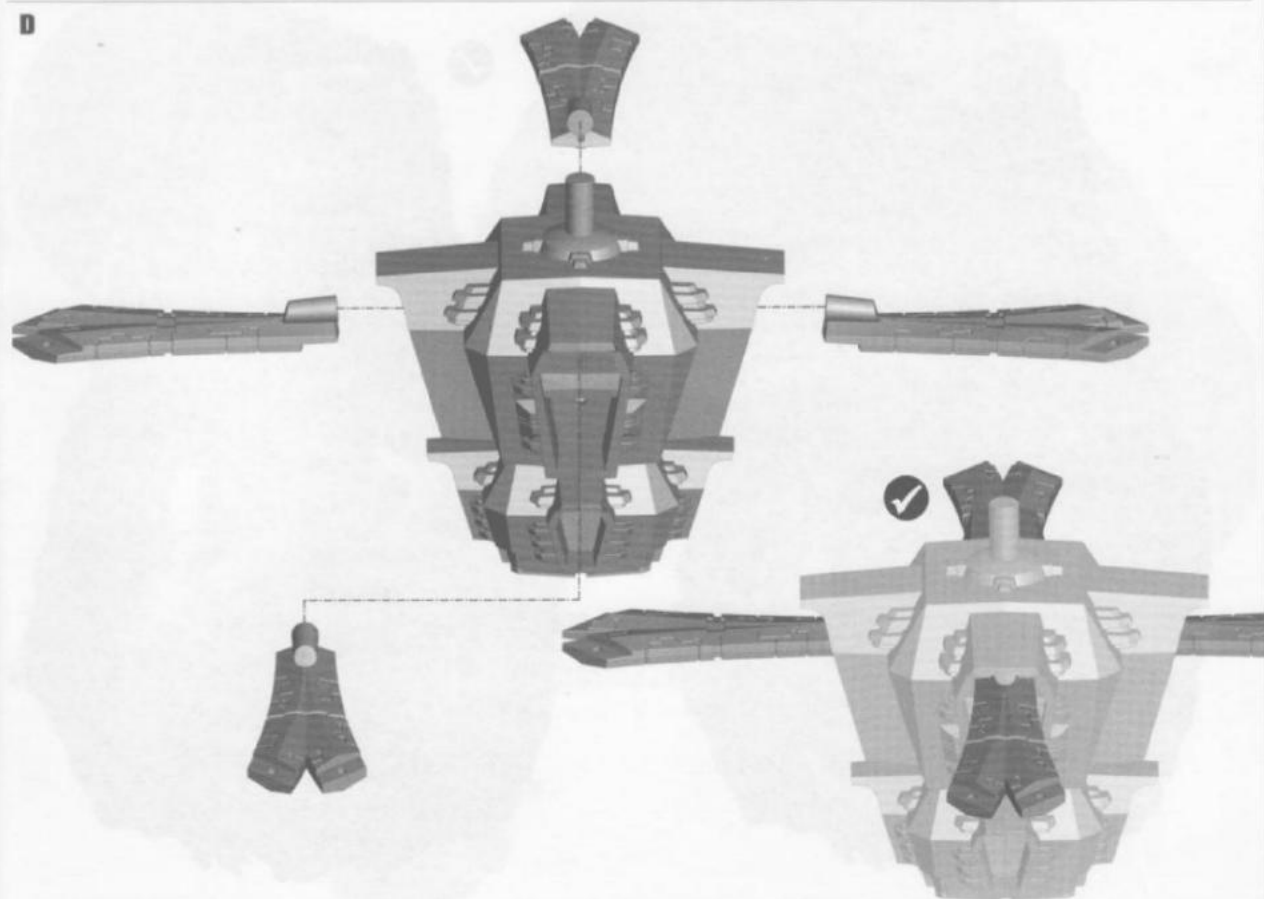
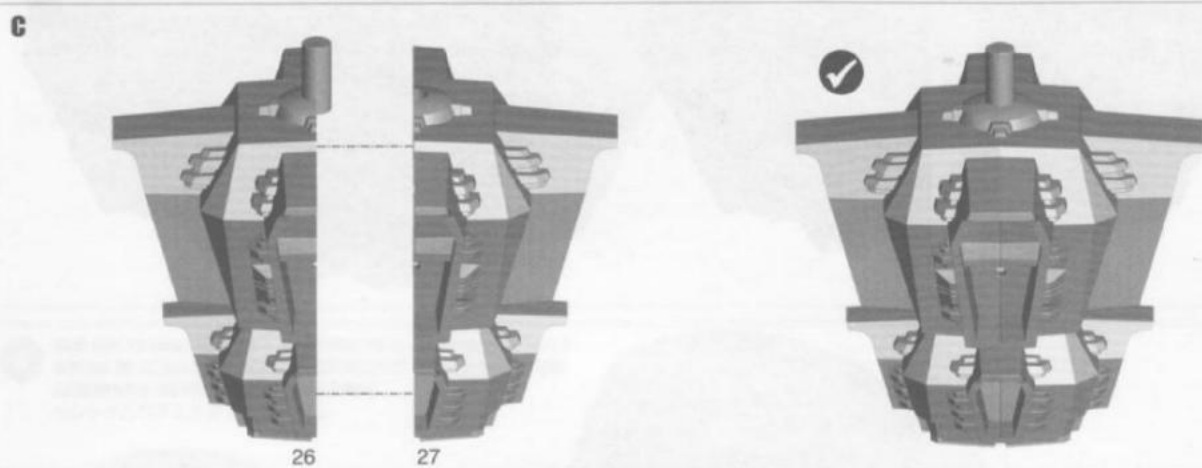
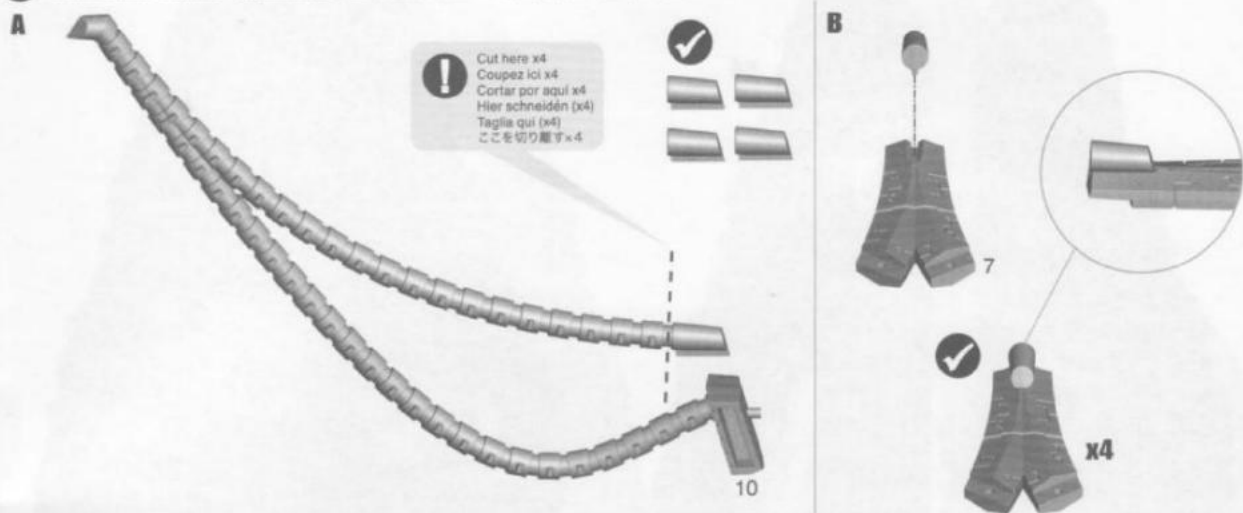
CHOICE OF PARTS
 CHOIX D'ÉLÉMENTS
 MODELOS DE COMPONENTES
 AUSWAHL AN TEILEN
 SCELTA DI COMPONENTI
 パーツの選択
 部件选择



CLOSE-UP VIEW
 VUE RAPPROCHÉE
 PRIMER PLANO
 NAHANSICHT
 INGRANDIMENTO
 特写图

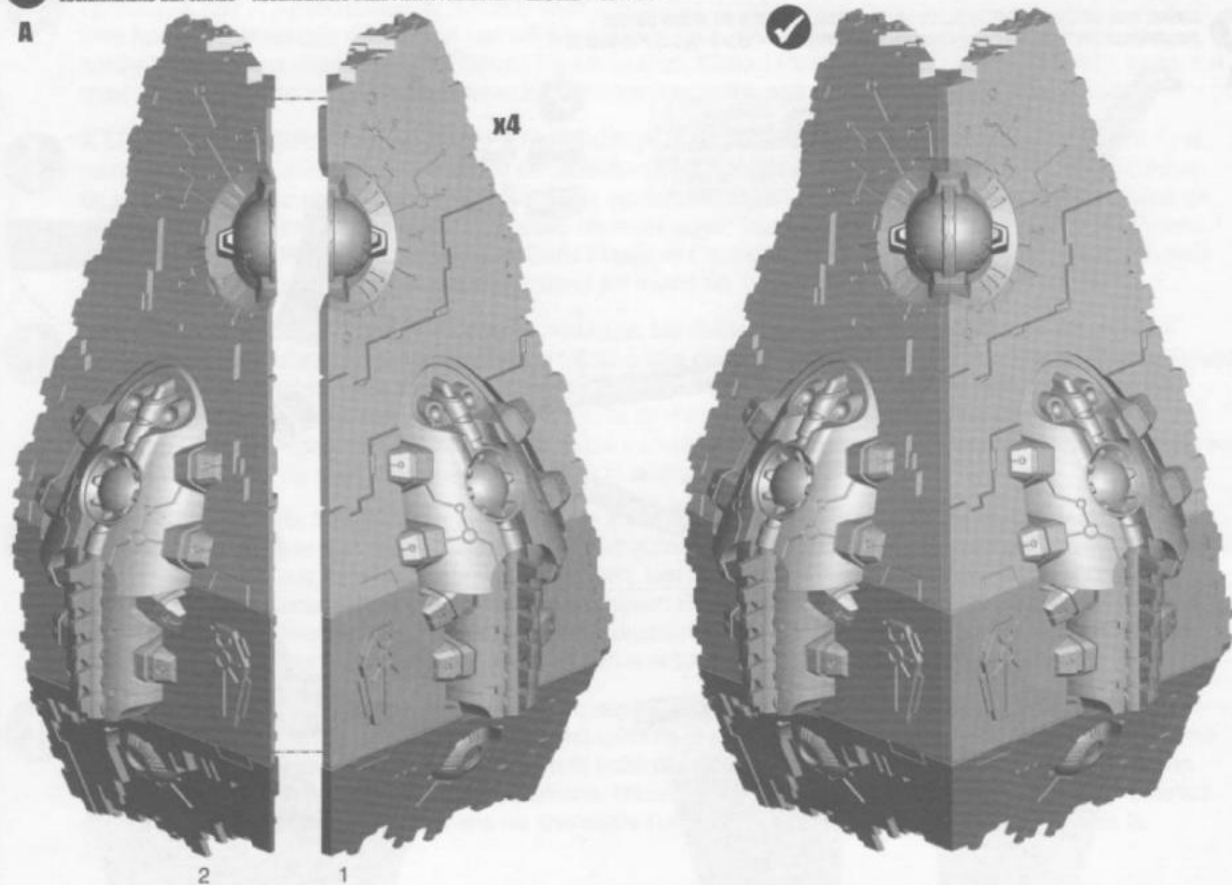


1 CENTRAL CORE ASSEMBLY • ASSEMBLAGE DU NOYAU CENTRAL • MONTAJE DEL NÚCLEO CENTRAL
ZUSAMMENBAU DES KERNS • ASSEMBLAGGIO DEL NUCLEO CENTRALE • セントラルコアの組み立て

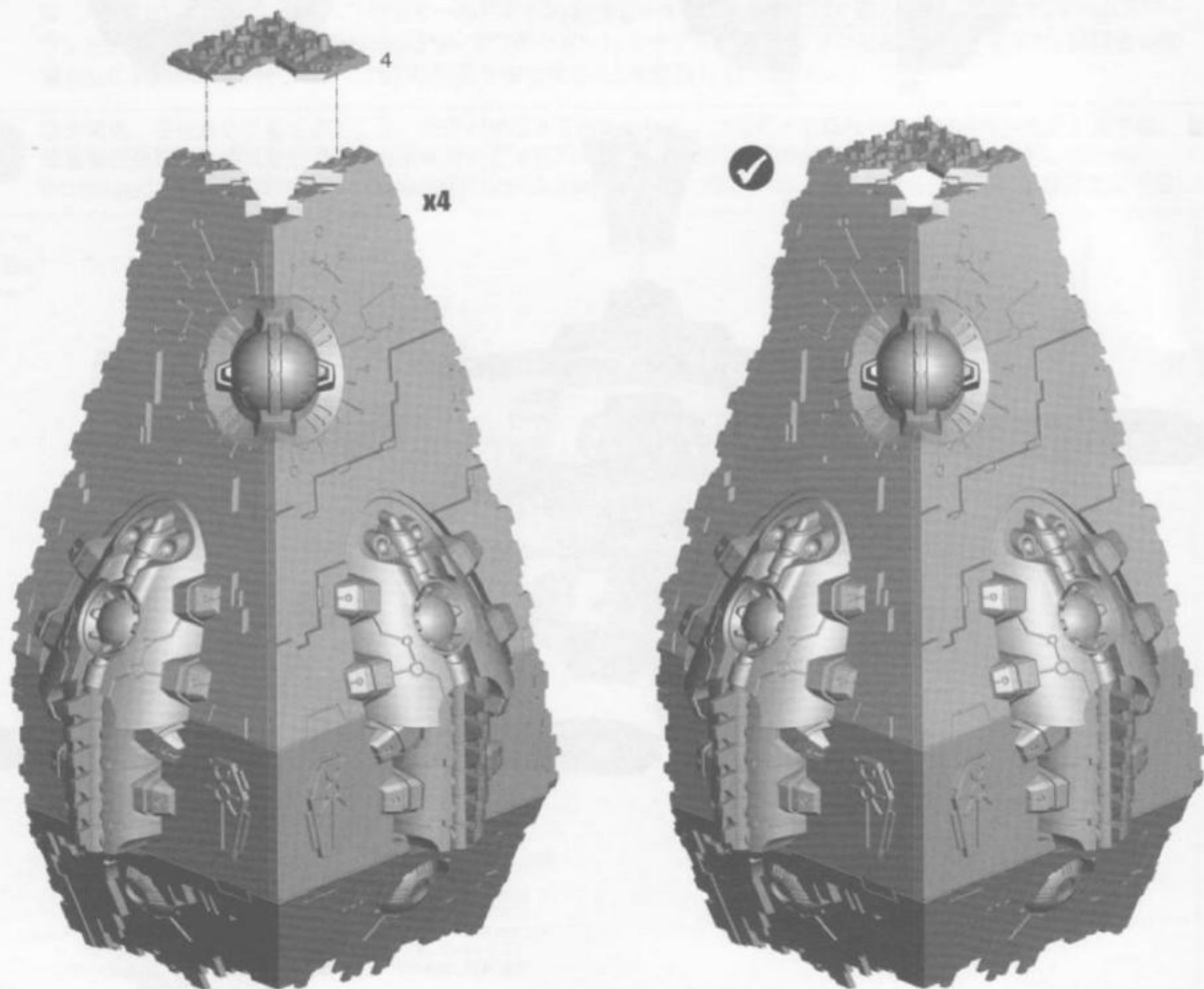


2 MAIN WALLS ASSEMBLY • ASSEMBLAGE DES PAROIS • MONTAJE DE LAS PAREDES PRINCIPALES
ZUSAMMENBAU DER WÜNDE • ASSEMBLAGGIO DELLE PARETI PRINCIPALI • 主要壁の組み立て

A

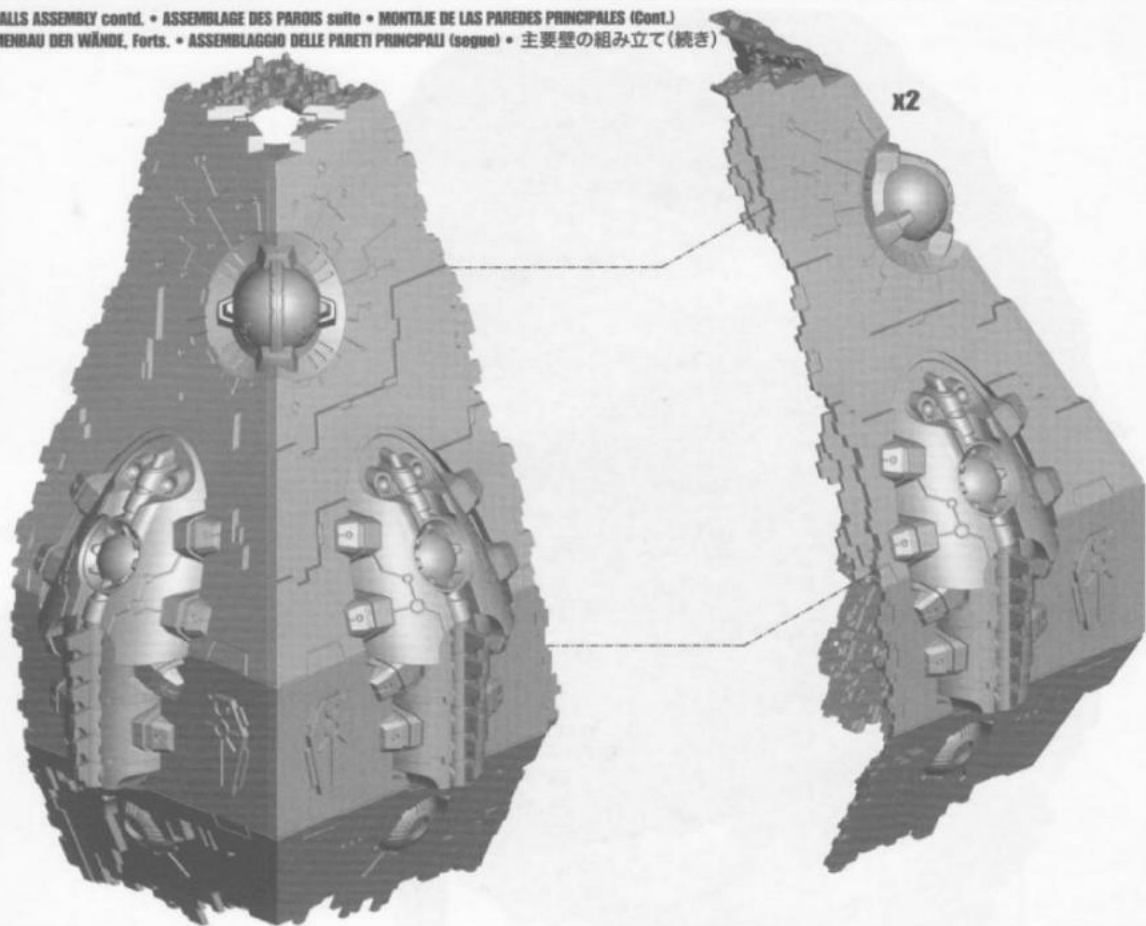


B



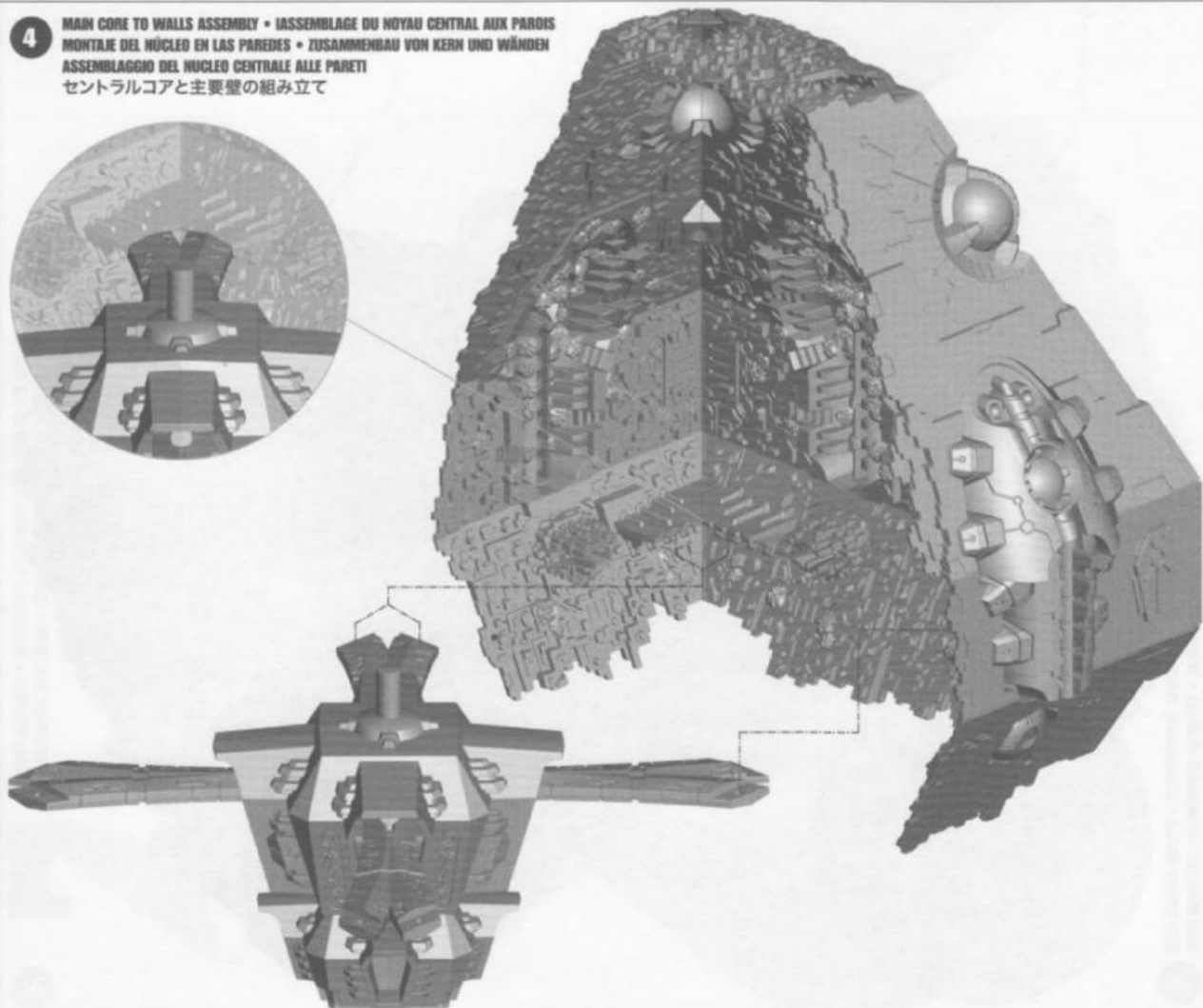
3

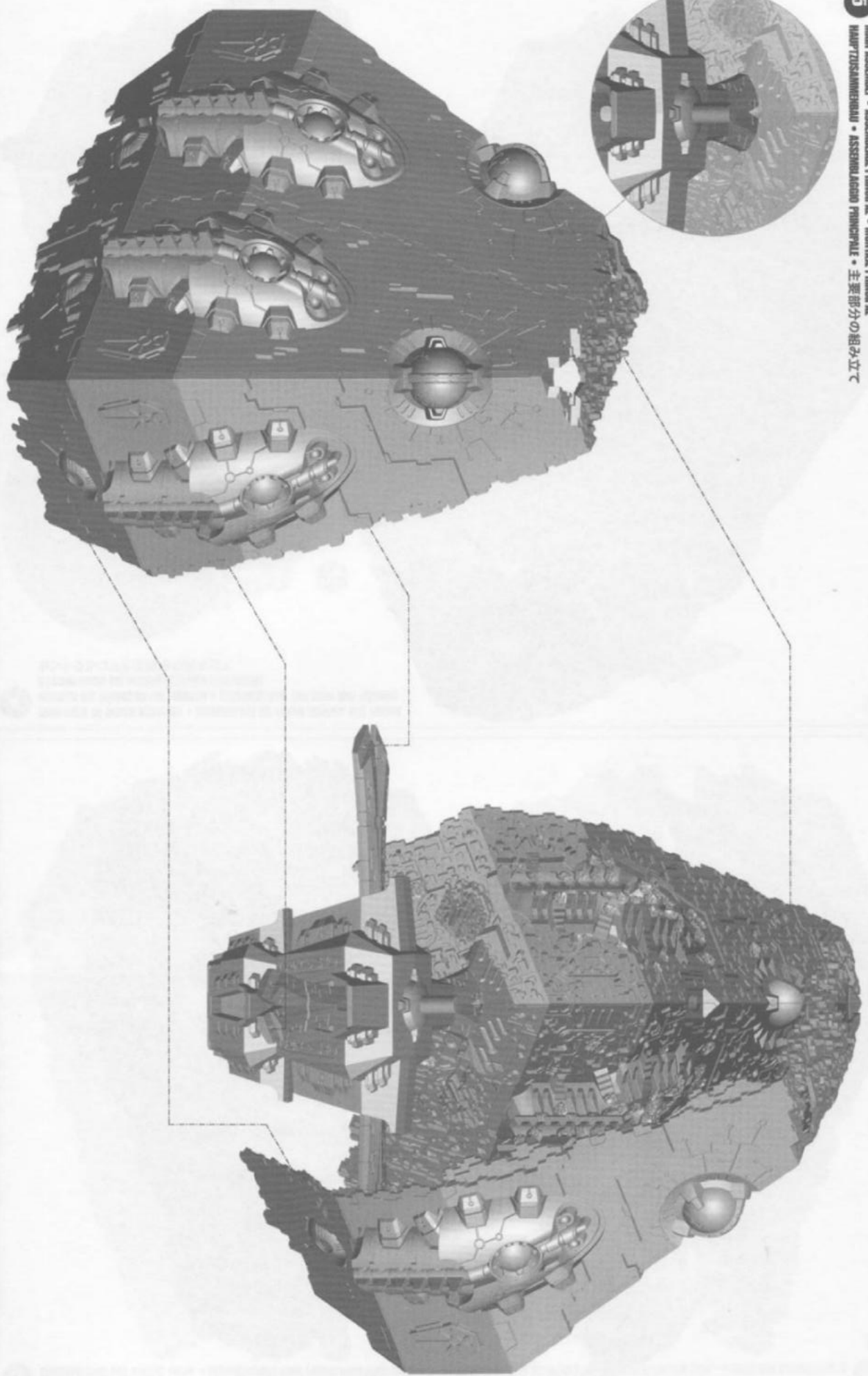
MAIN WALLS ASSEMBLY contd. • ASSEMBLAGE DES PAROIS suite • MONTAJE DE LAS PAREDES PRINCIPALES (Cont.)
 ZUSAMMENBAU DER WÄNDE, Forts. • ASSEMBLAGGIO DELLE PARETI PRINCIPALI (segue) • 主要壁の組み立て(続き)



4

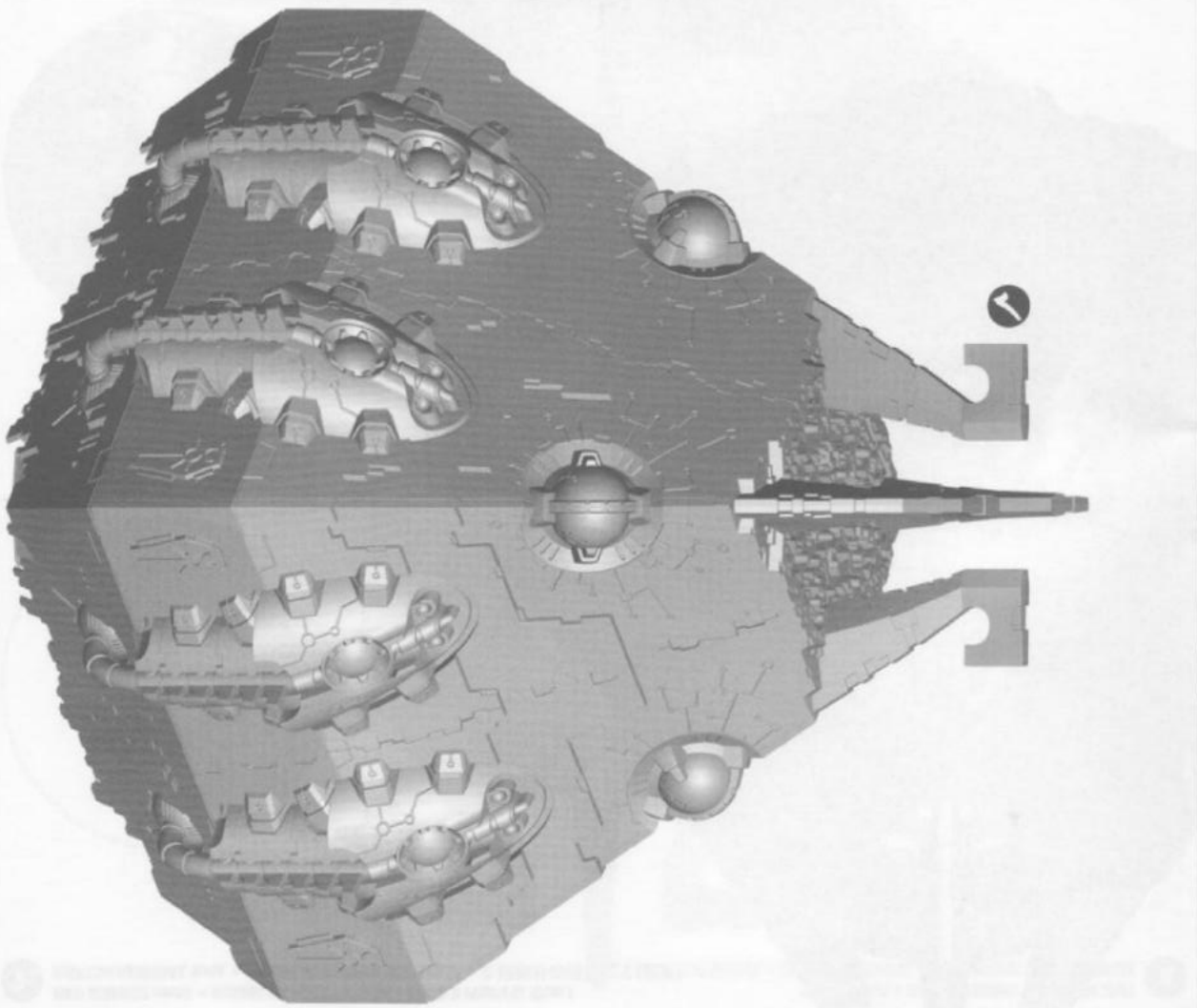
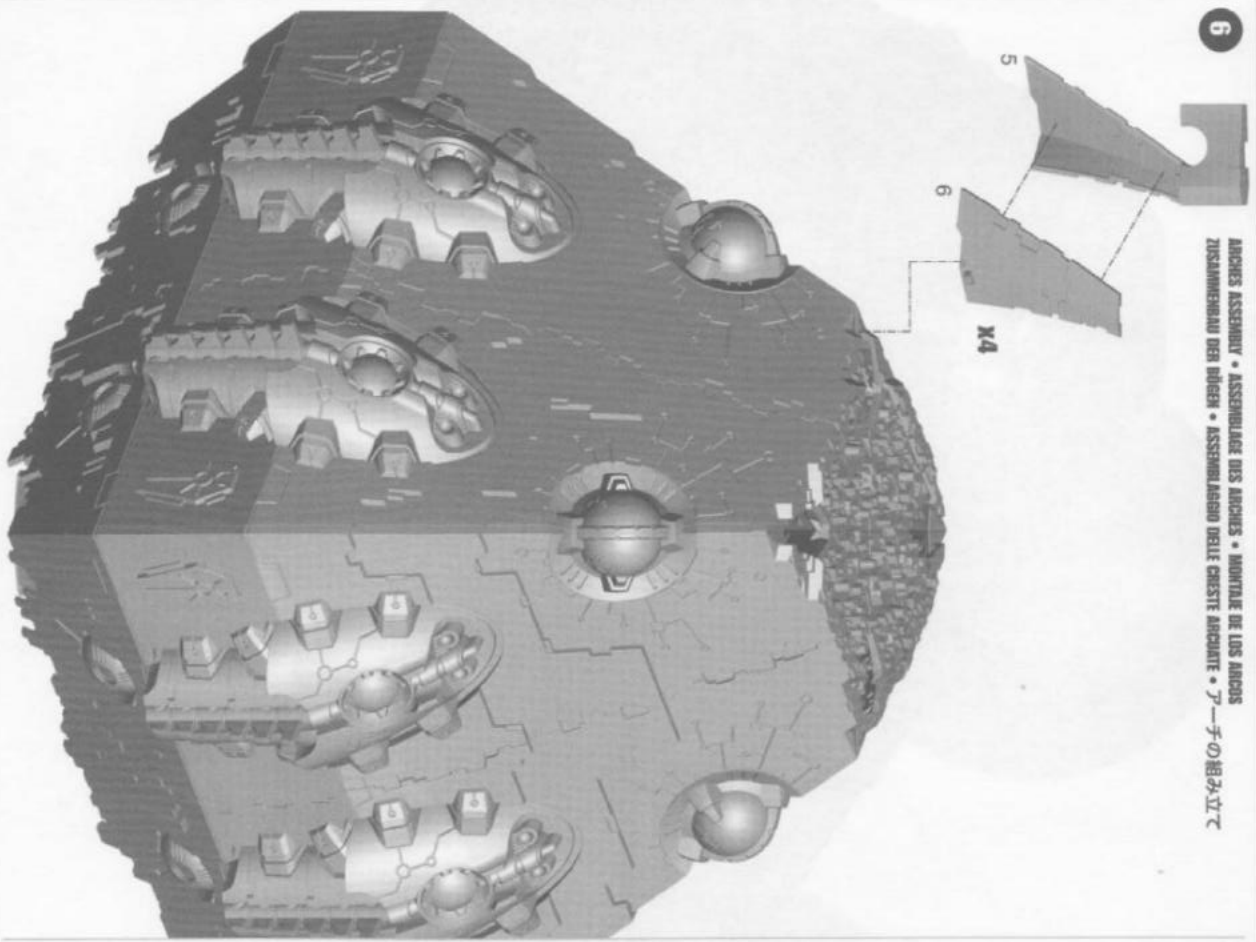
MAIN CORE TO WALLS ASSEMBLY • ASSEMBLAGE DU NOYAU CENTRAL AUX PAROIS
 MONTAJE DEL NÚCLEO EN LAS PAREDES • ZUSAMMENBAU VON KERN UND WÄNDEN
 ASSEMBLAGGIO DEL NUCLEO CENTRALE ALLE PARETI
 センtralコアと主要壁の組み立て





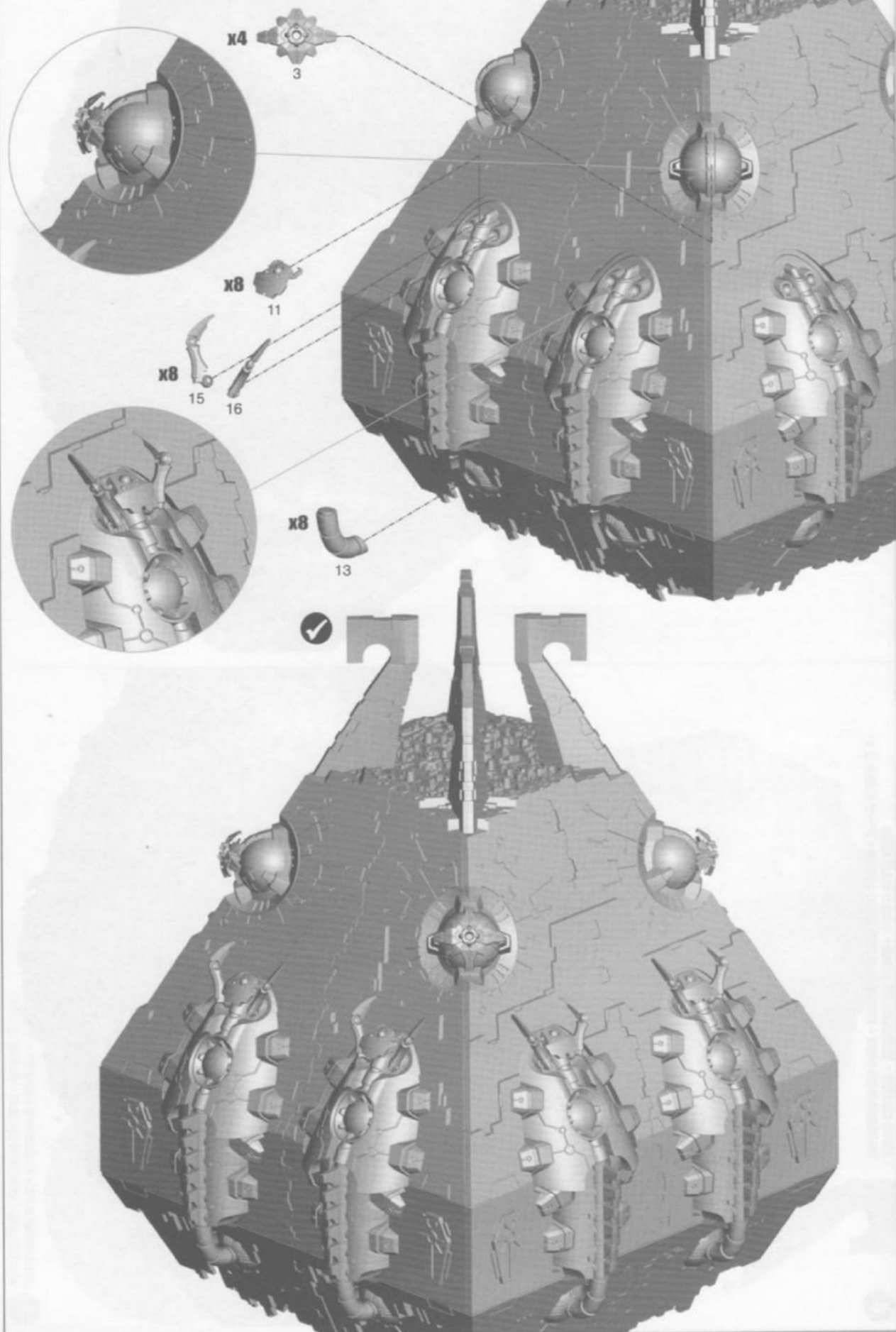
6

ARCHES ASSEMBLY • ASSEMBLAGE DES ARCHES • MONTAGE DE LOS ARCOS
ZUSAMMENBAU DER BOGEN • ASSEMBLAGGIO DELLE CRESTE ARCIATE • アーチの組み立て

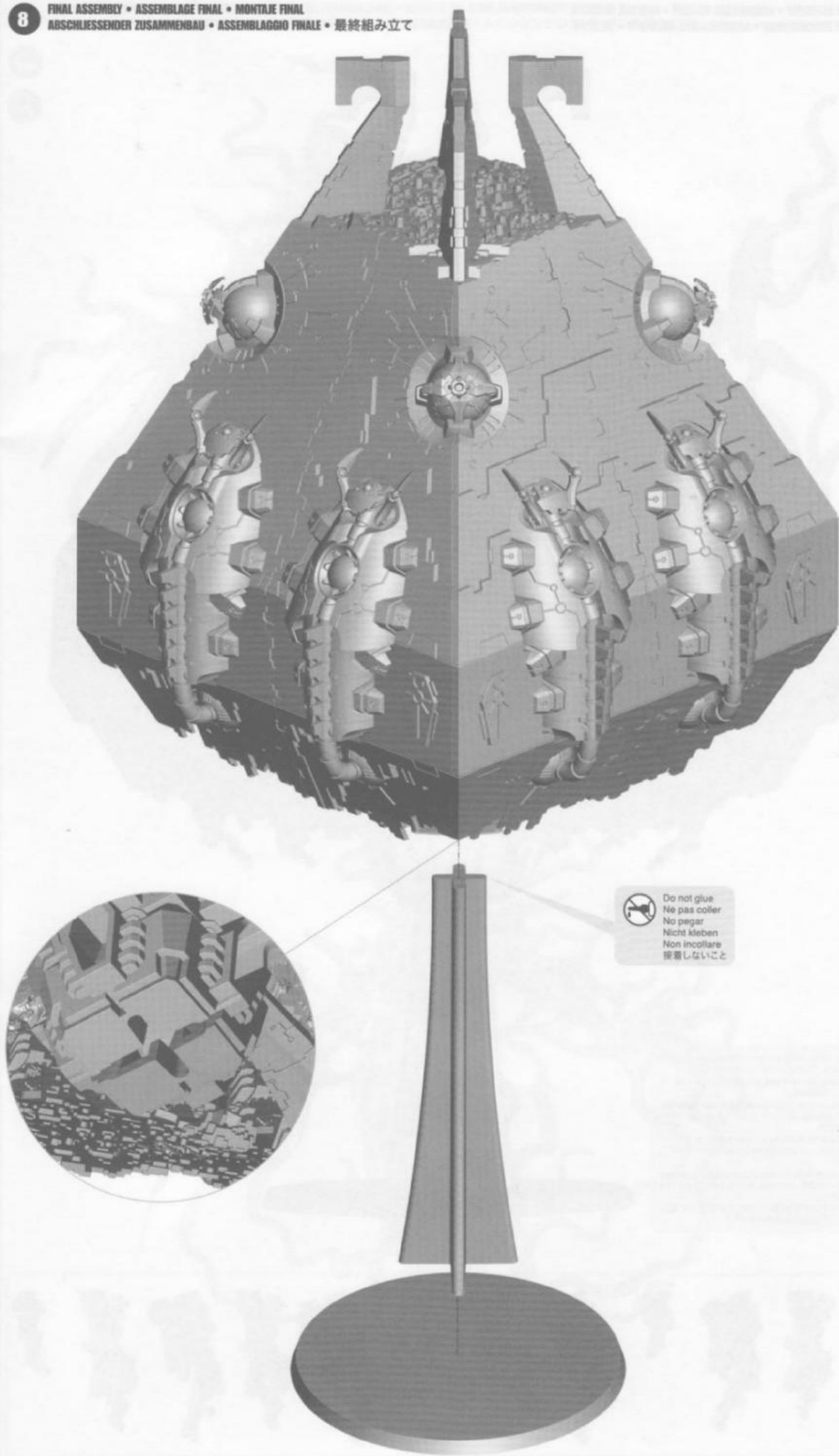


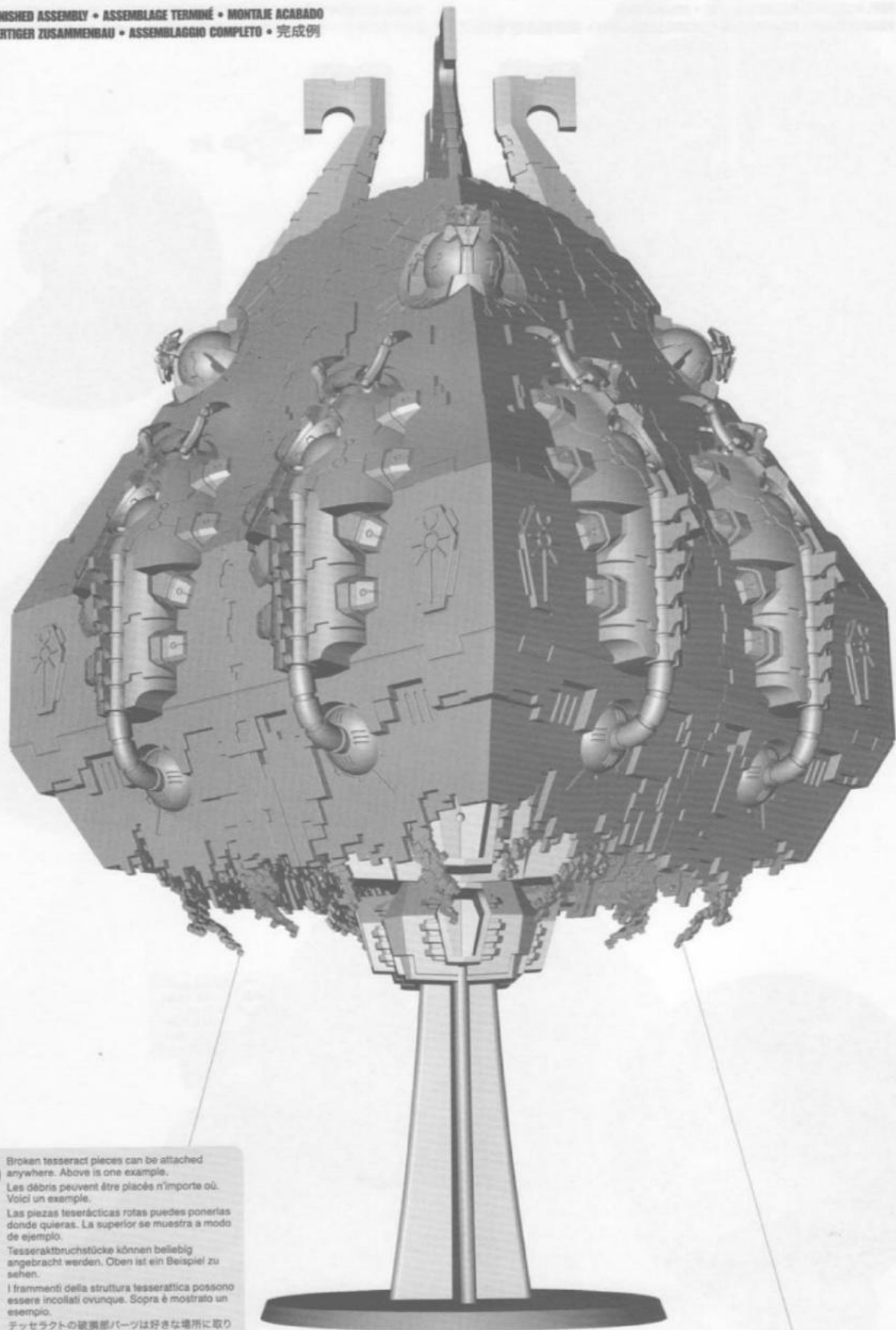
7

MAIN ASSEMBLY contd. • ASSEMBLAGE PRINCIPAL suite • MONTAGE PRINCIPAL (Cont.)
HAUPTZUSAMMENBAU, Forts. • ASSEMBLAGGIO PRINCIPALE (segue) • 主要部分の組み立て(続き)



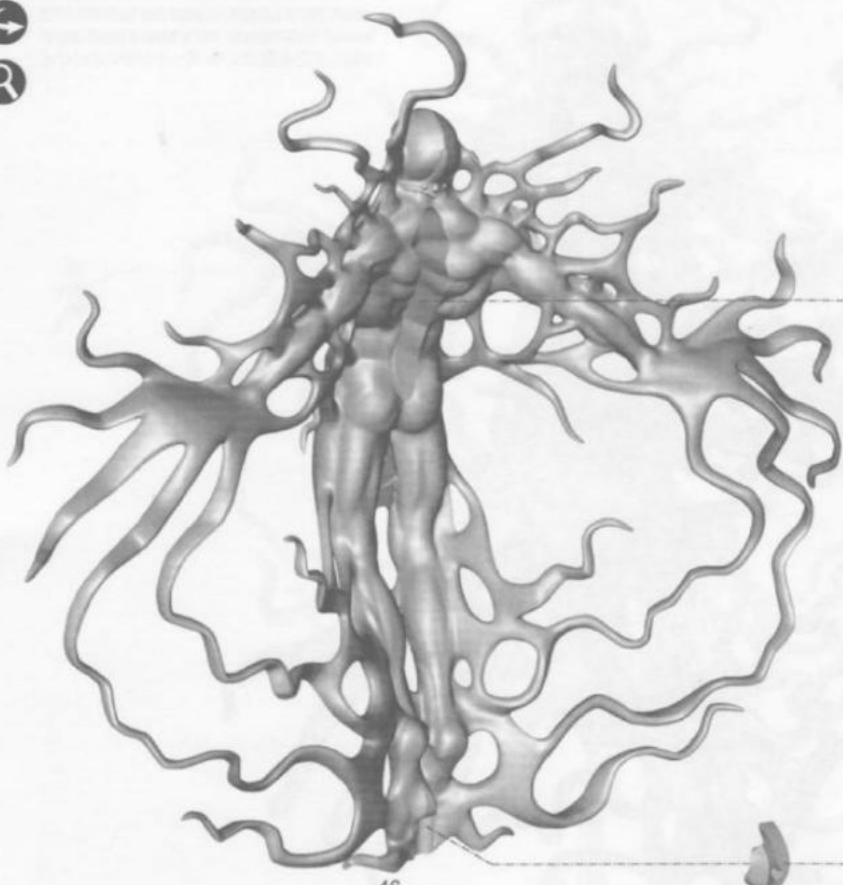
8

FINAL ASSEMBLY • ASSEMBLAGE FINAL • MONTAJE FINAL
ABSCHLIESSENDE ZUSAMMENBAU • ASSEMBLAGGIO FINALE • 最終組み立て



Broken tesseract pieces can be attached anywhere. Above is one example.
Les débris peuvent être placés n'importe où. Voici un exemple.
Las piezas tesseracticas rotas puedes ponerlas donde quieras. La superior se muestra a modo de ejemplo.
Tesseractbruchstücke können beliebig angebracht werden. Oben ist ein Beispiel zu sehen.
I frammenti della struttura tesseractica possono essere incollati ovunque. Sopra è mostrato un esempio.
テッセラクトの破損部パーツは好きな場所に取り付けられる。上写真はその一例だ。





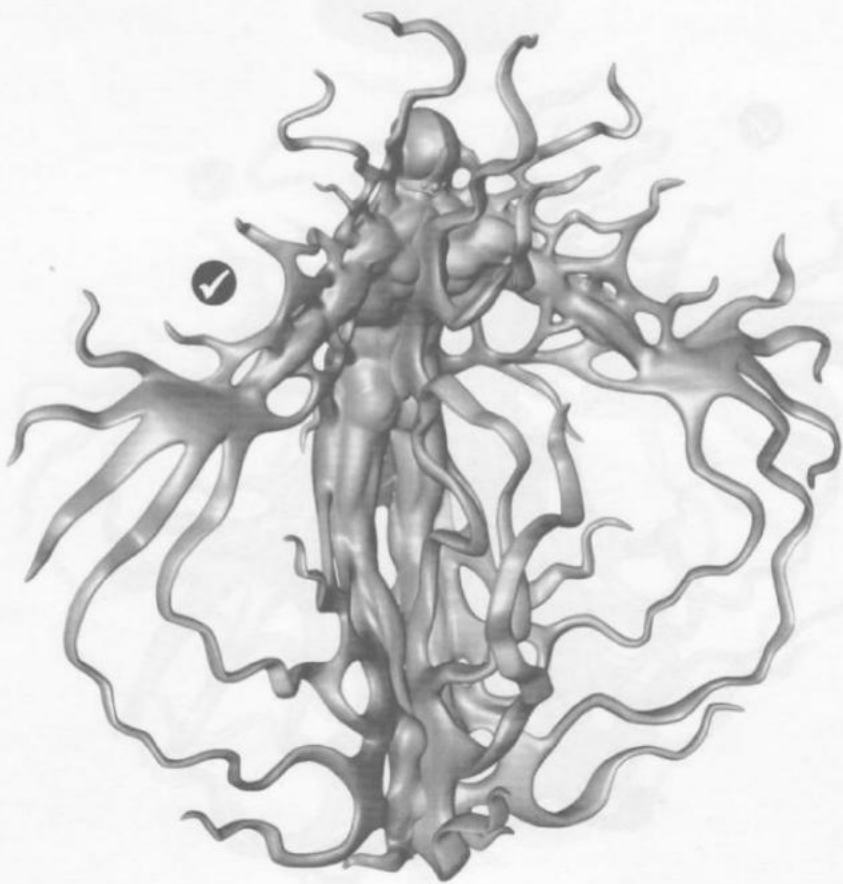
46

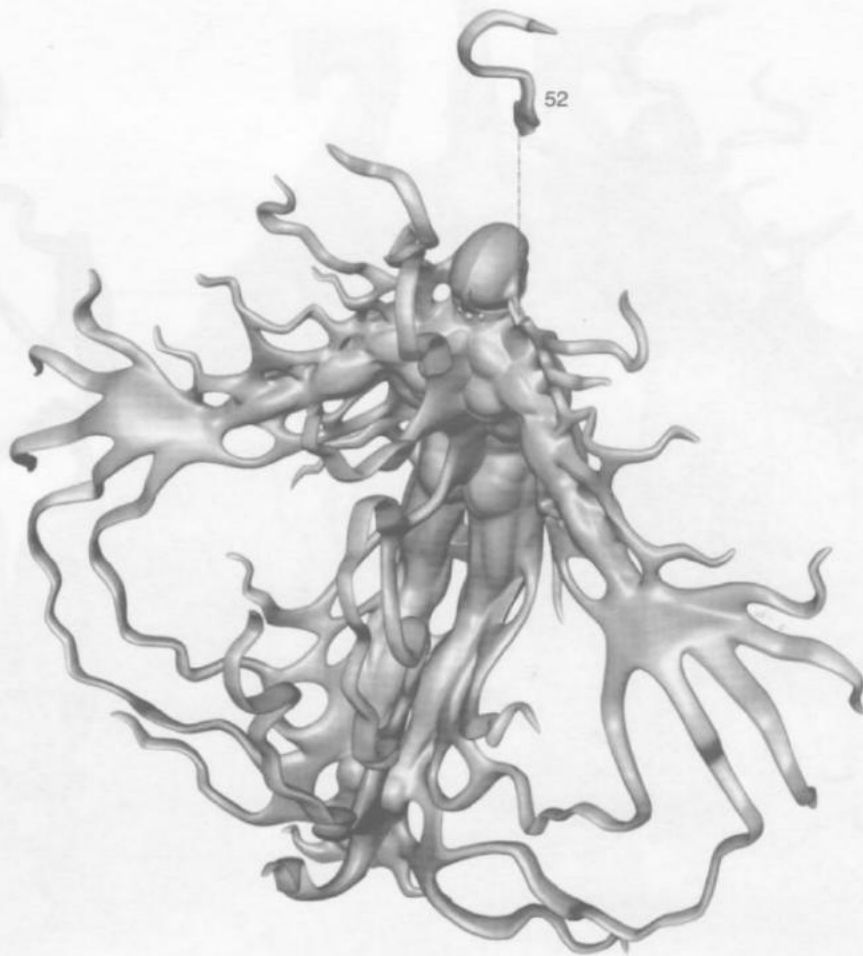


49



48





12

TRANSCENDENT C'TAN ASSEMBLY contd.

ASSEMBLAGE DU C'TAN TRANSCENDANT suite

MONTAJE DEL C'TAN TRANSCENDENTE (Cont.)

ZUSAMMENBAU DES TRANSCENDIEREN C'TAN. Forts.

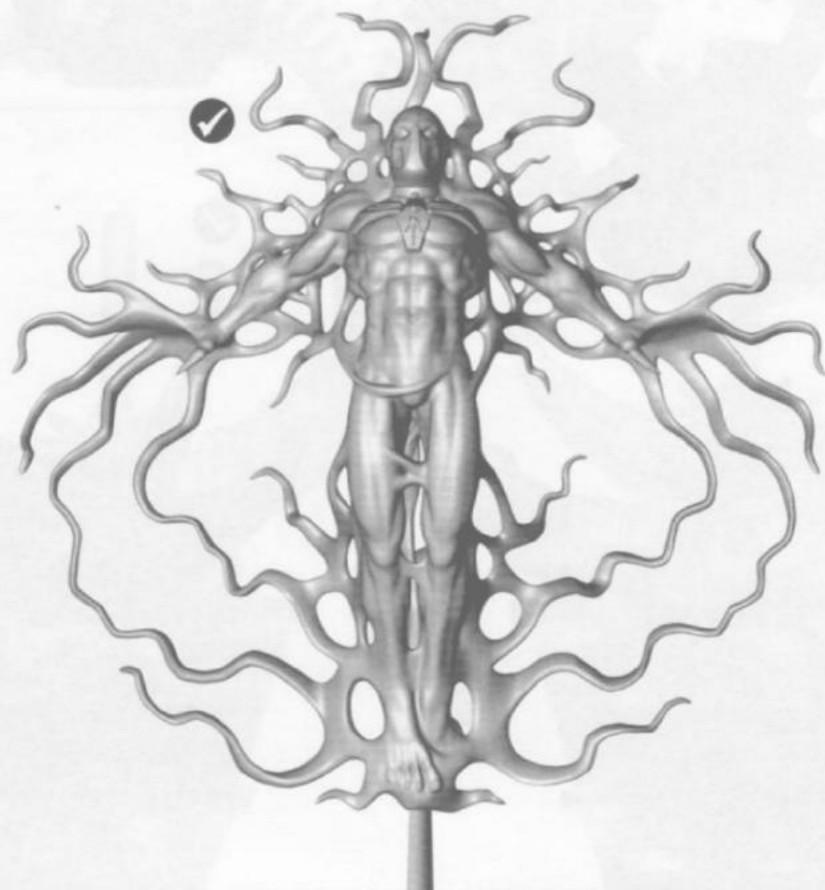
ASSEMBLAGGIO DELLO C'TAN TRANSCENDENTE (segue)

トランセンデント・ク・タンの組み立て(続き)

50

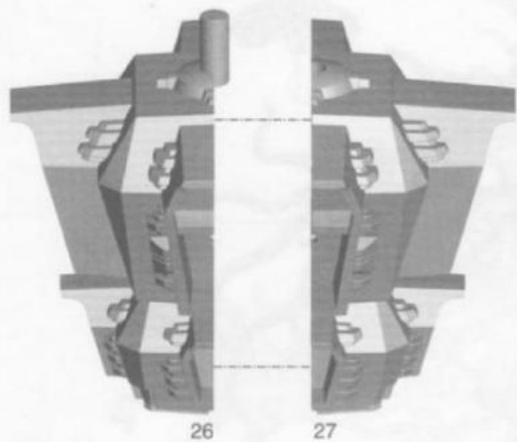
47

51



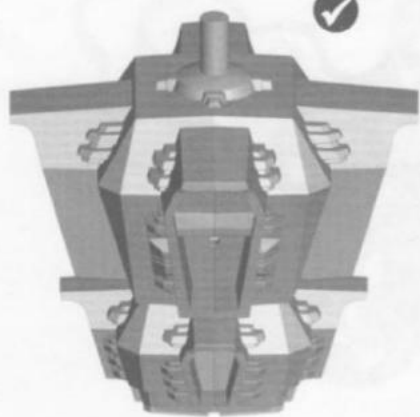
13 CENTRAL CORE ASSEMBLY • ASSEMBLAGE DU NOYAU CENTRAL • MONTAJE DEL NÚCLEO CENTRAL
ZUSAMMENBAU DES KERNS • ASSEMBLAGGIO DEL NUCLEO CENTRALE • セントラルコアの組み立て

A

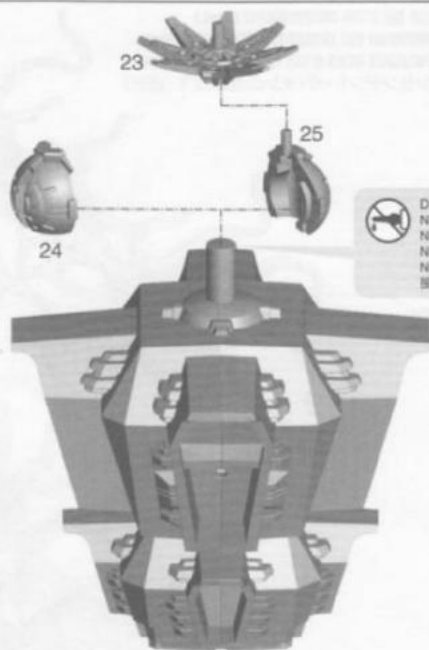


26

27



B

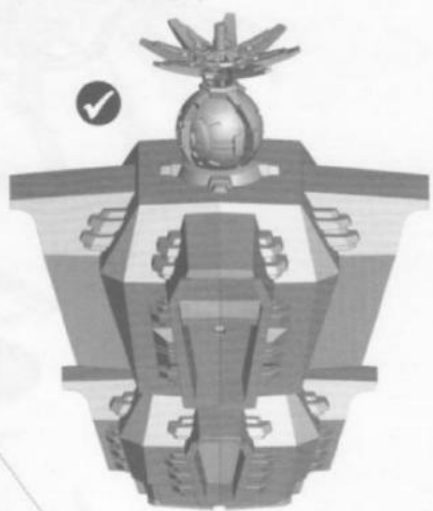


23

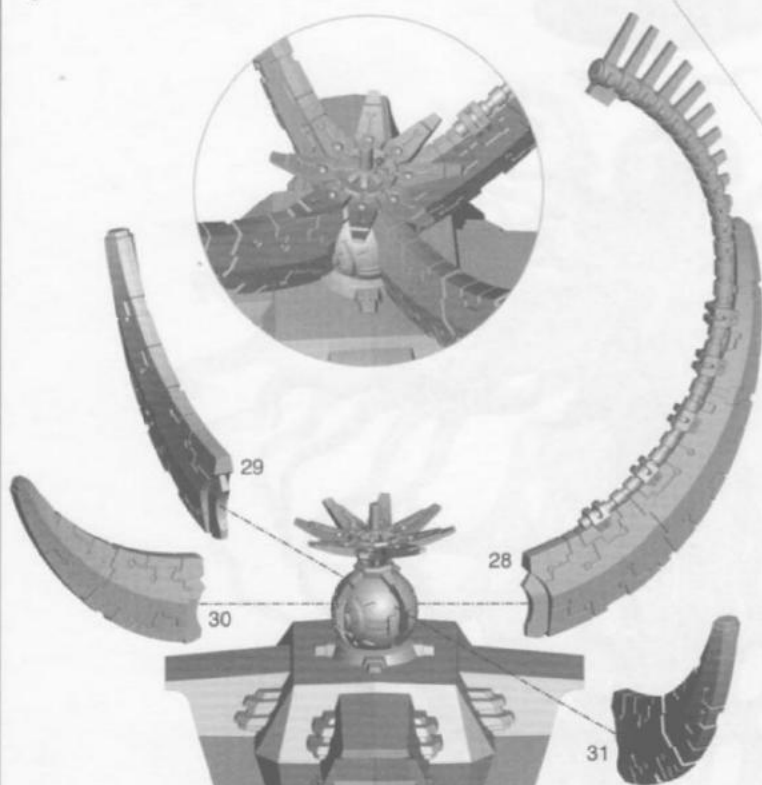
25

24

Do not glue
Ne pas coller
No pegar
Nicht kleben
Non incollare
接着しないこと



C



29

28

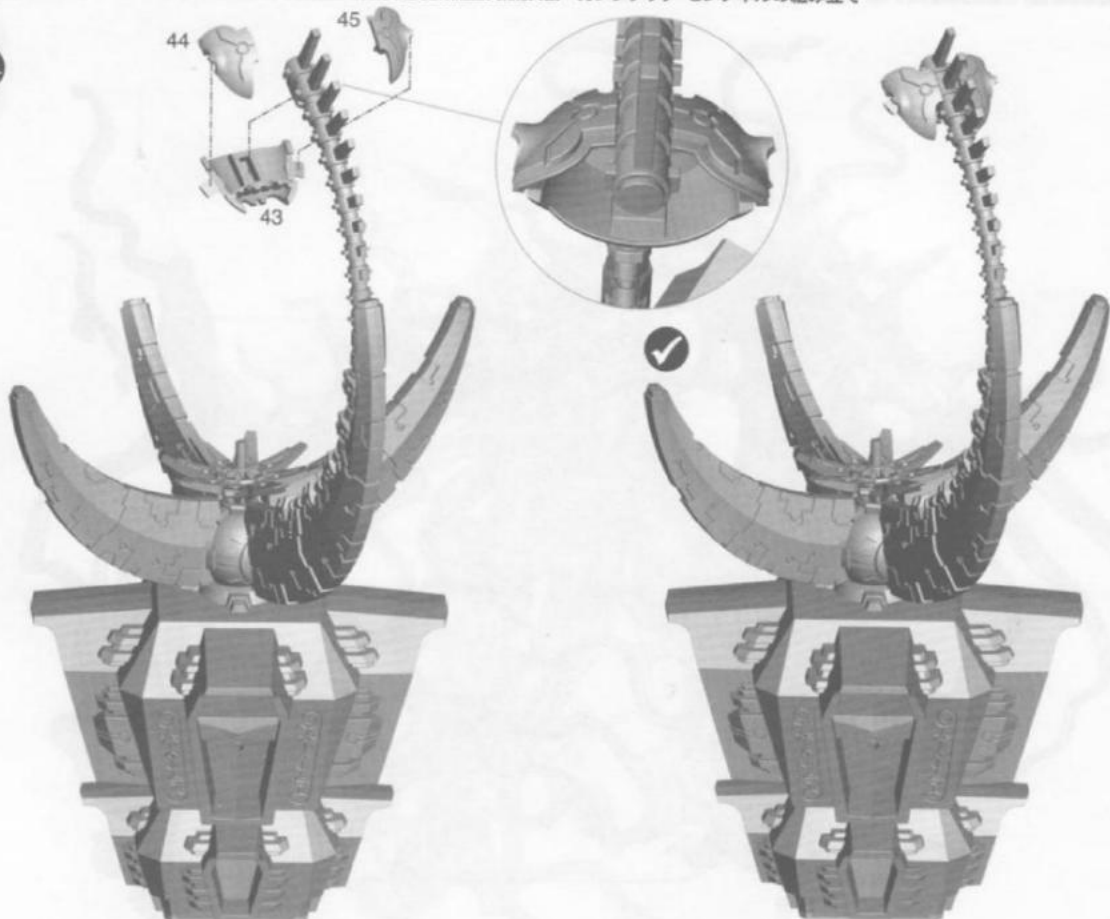
30

31

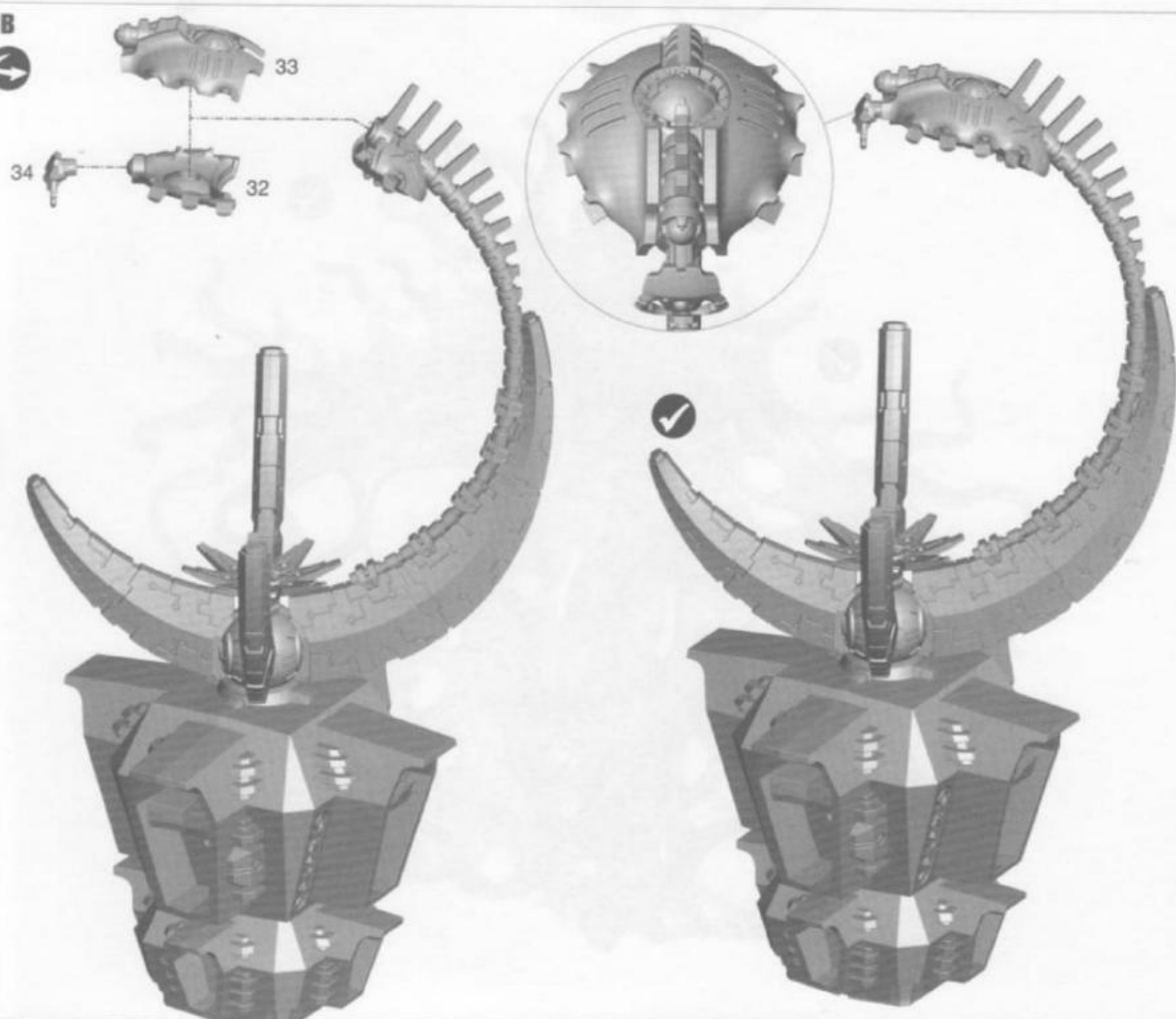
14

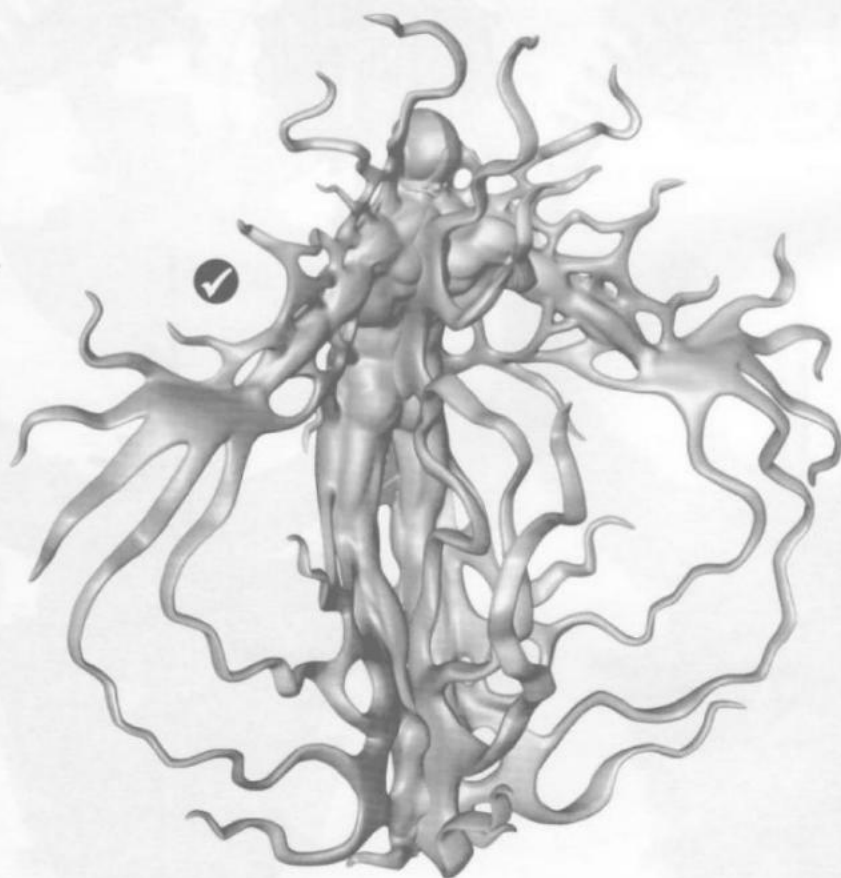
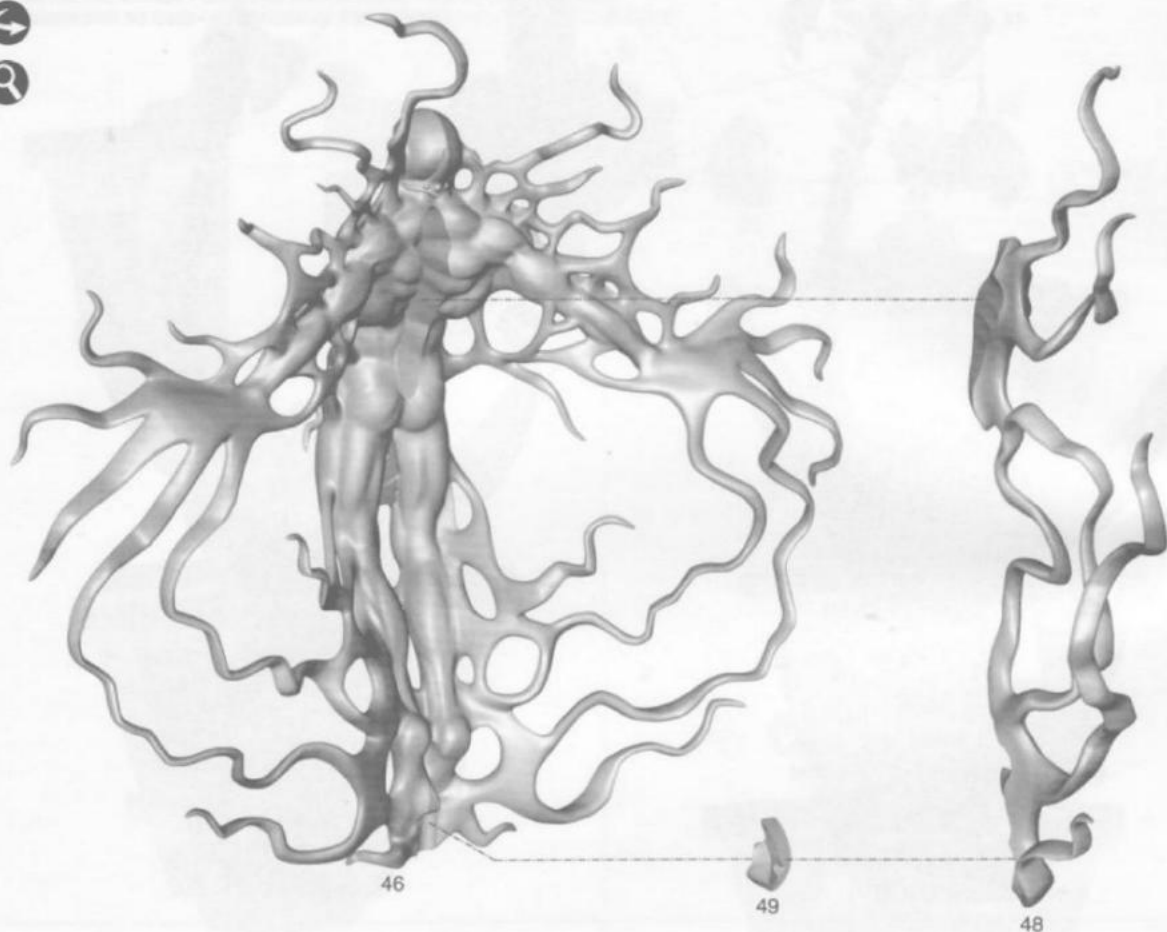
CANOPTEX SENTINEL ASSEMBLY • ASSEMBLAGE DU SENTINELLE CANOPTEX • MONTAJE DEL SENTINELA CANÓPTICO
 ZUSAMMENBAU DER KANOPTEX-WÄRTER • ASSEMBLAGGIO DEL SENTINELLA CANOPTEX • カノプテック・センチネルの組み立て

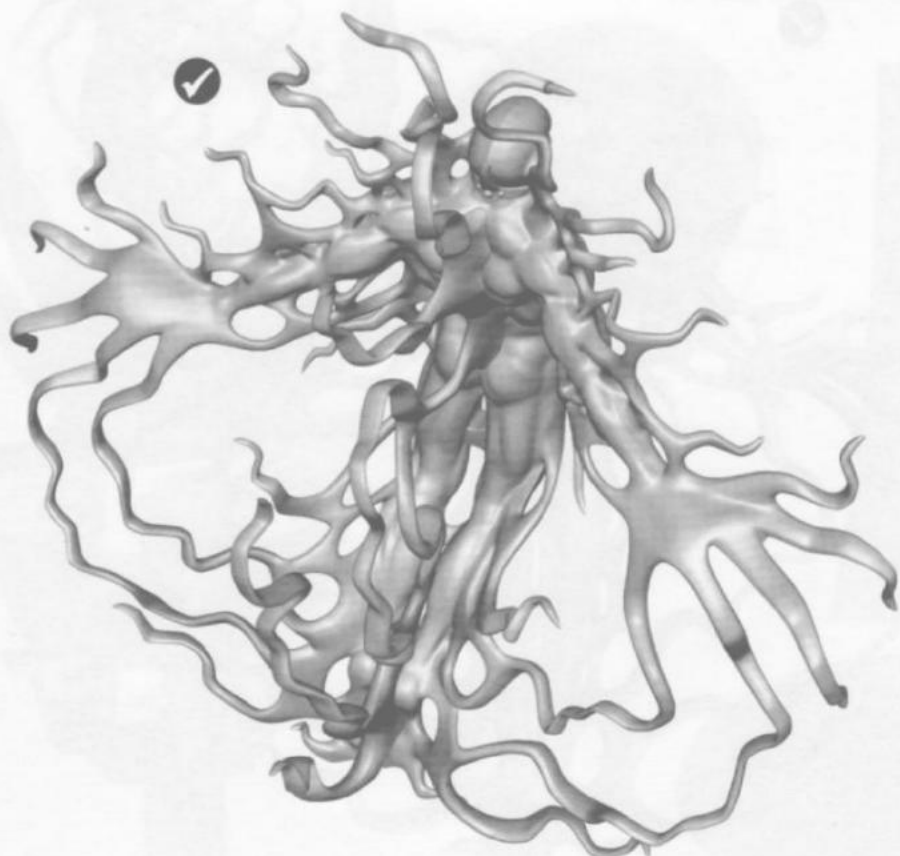
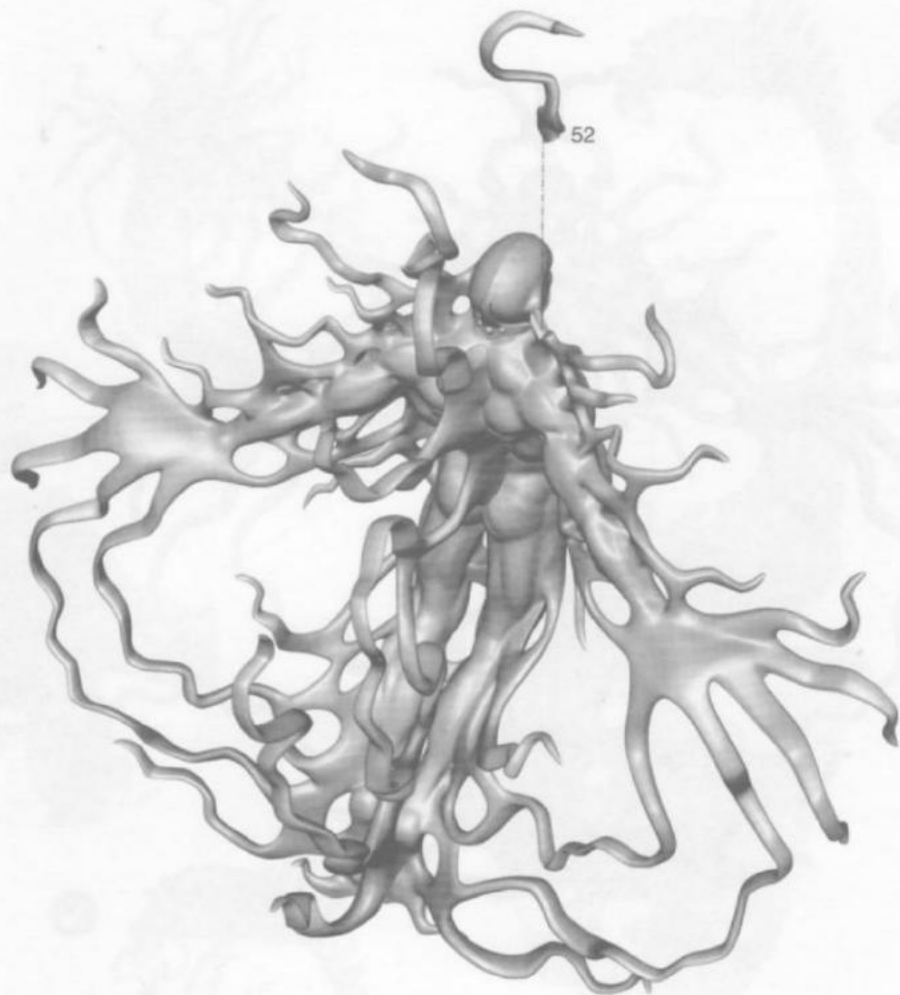
A

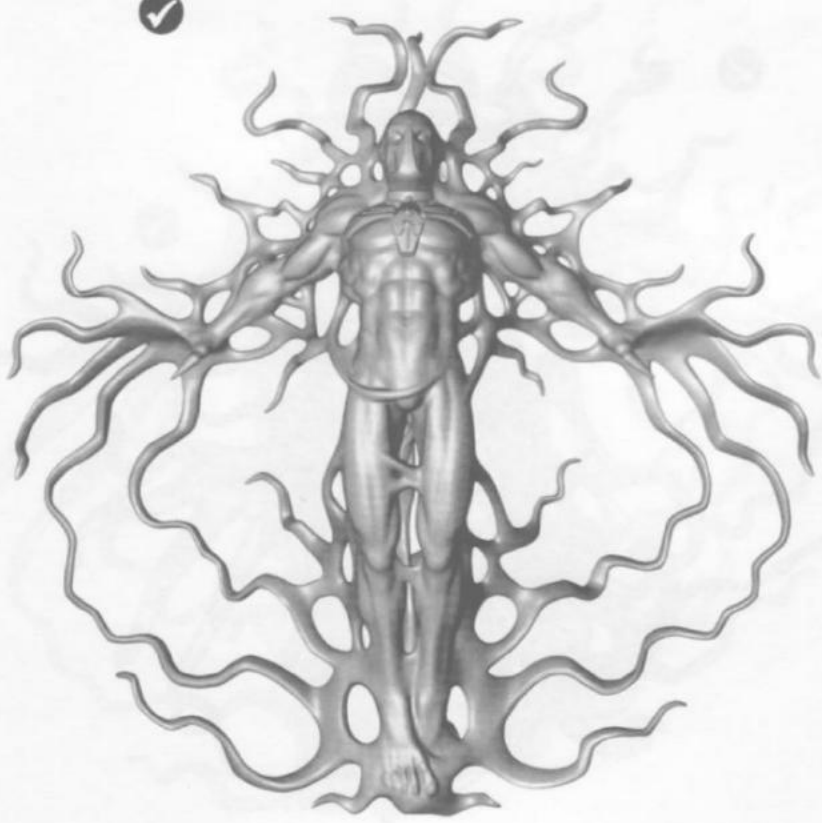
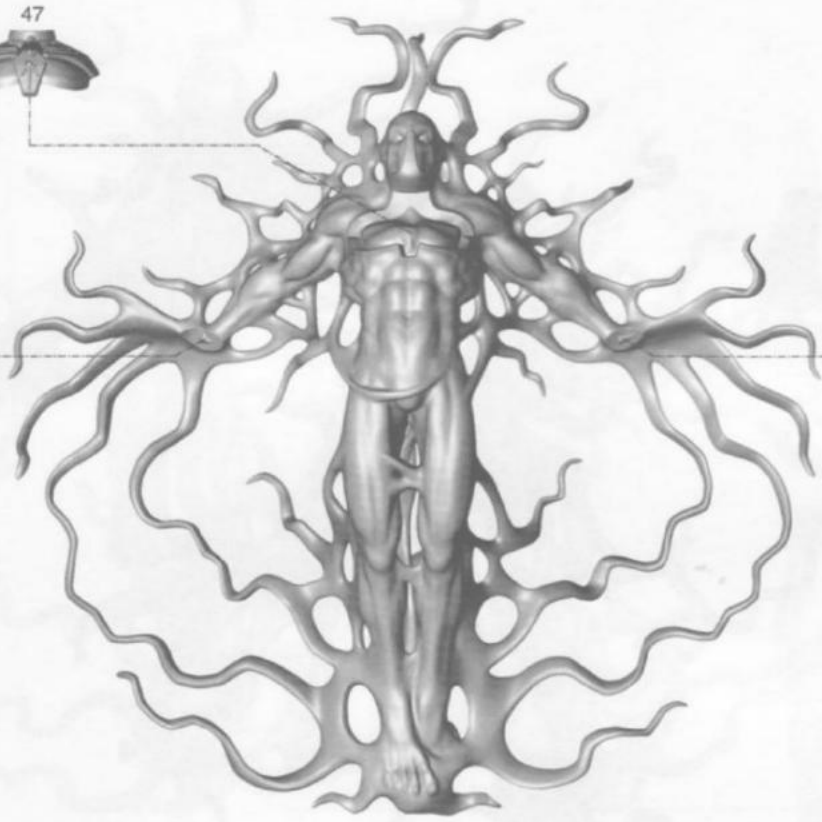


B

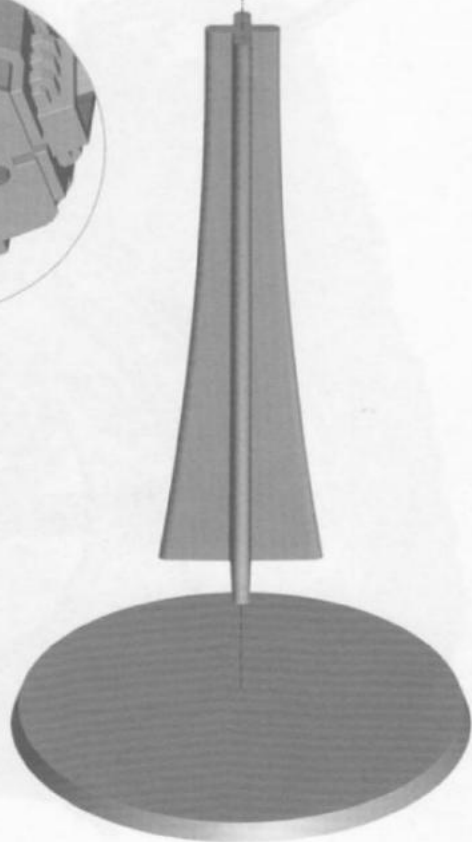
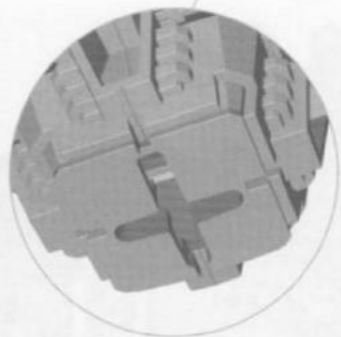
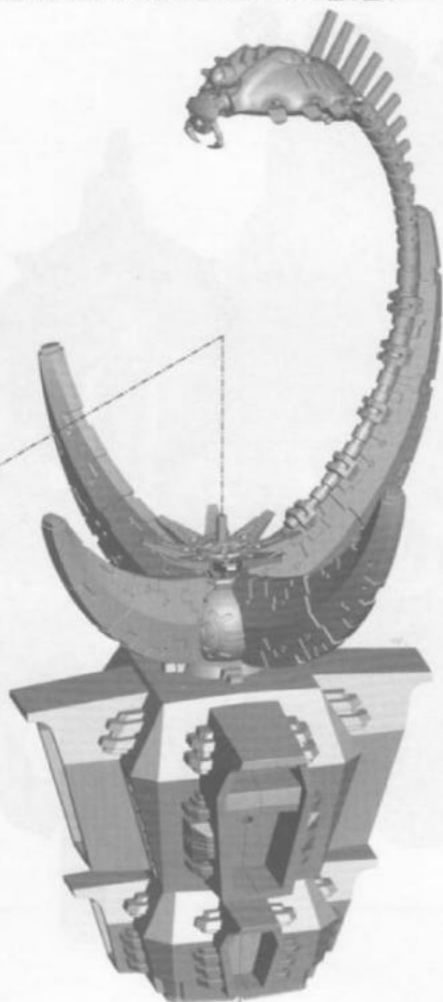


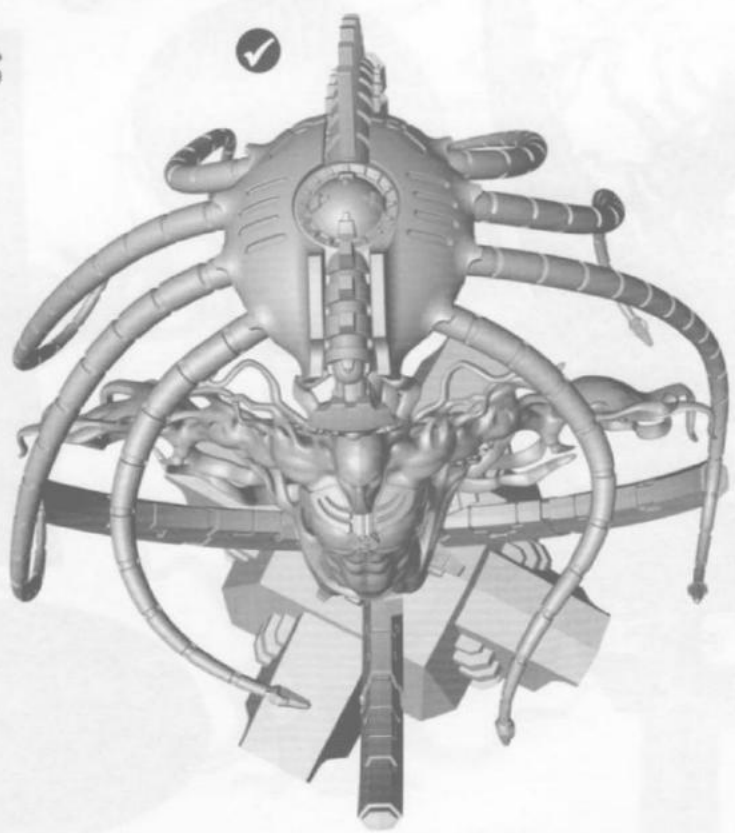
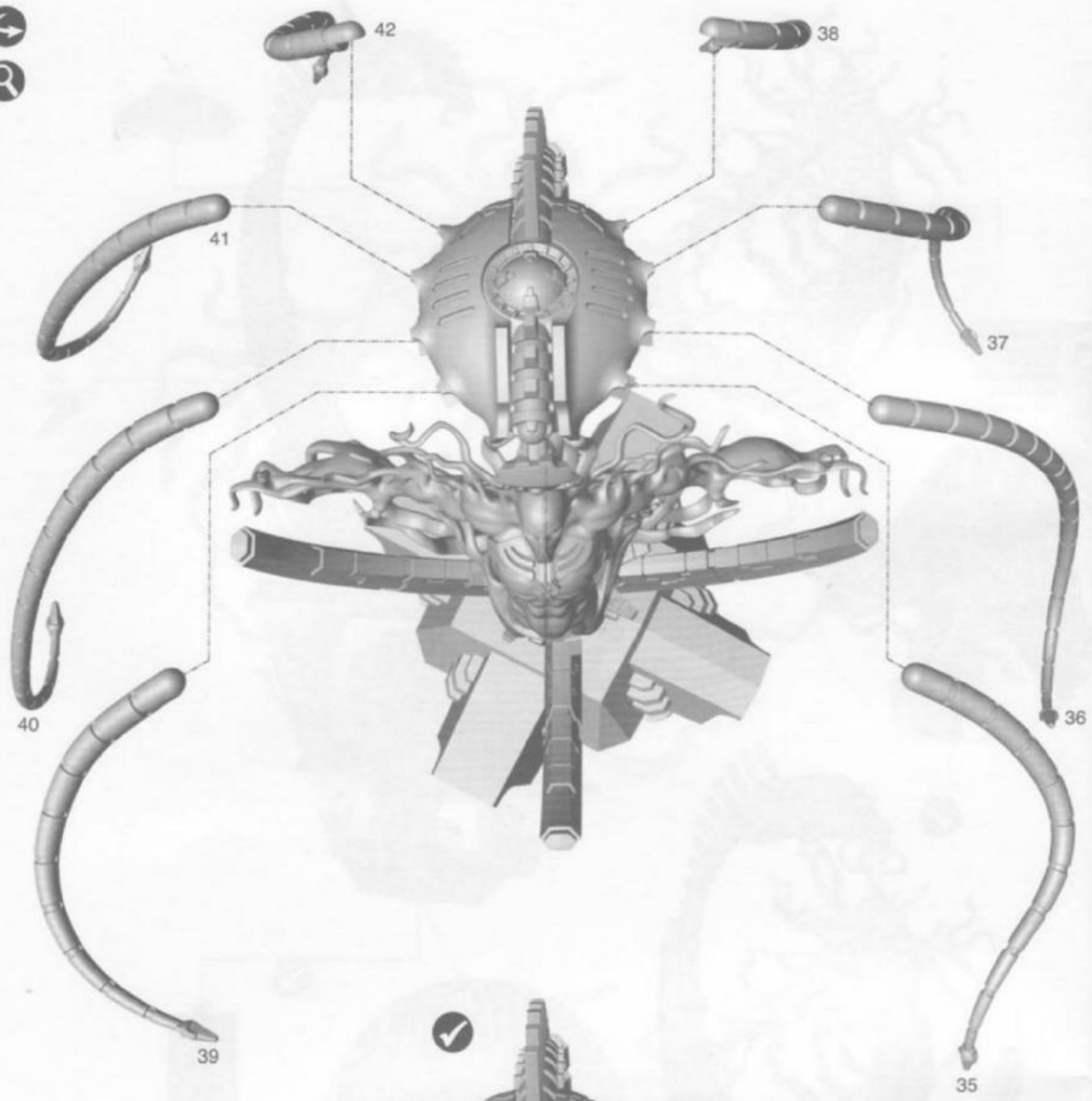




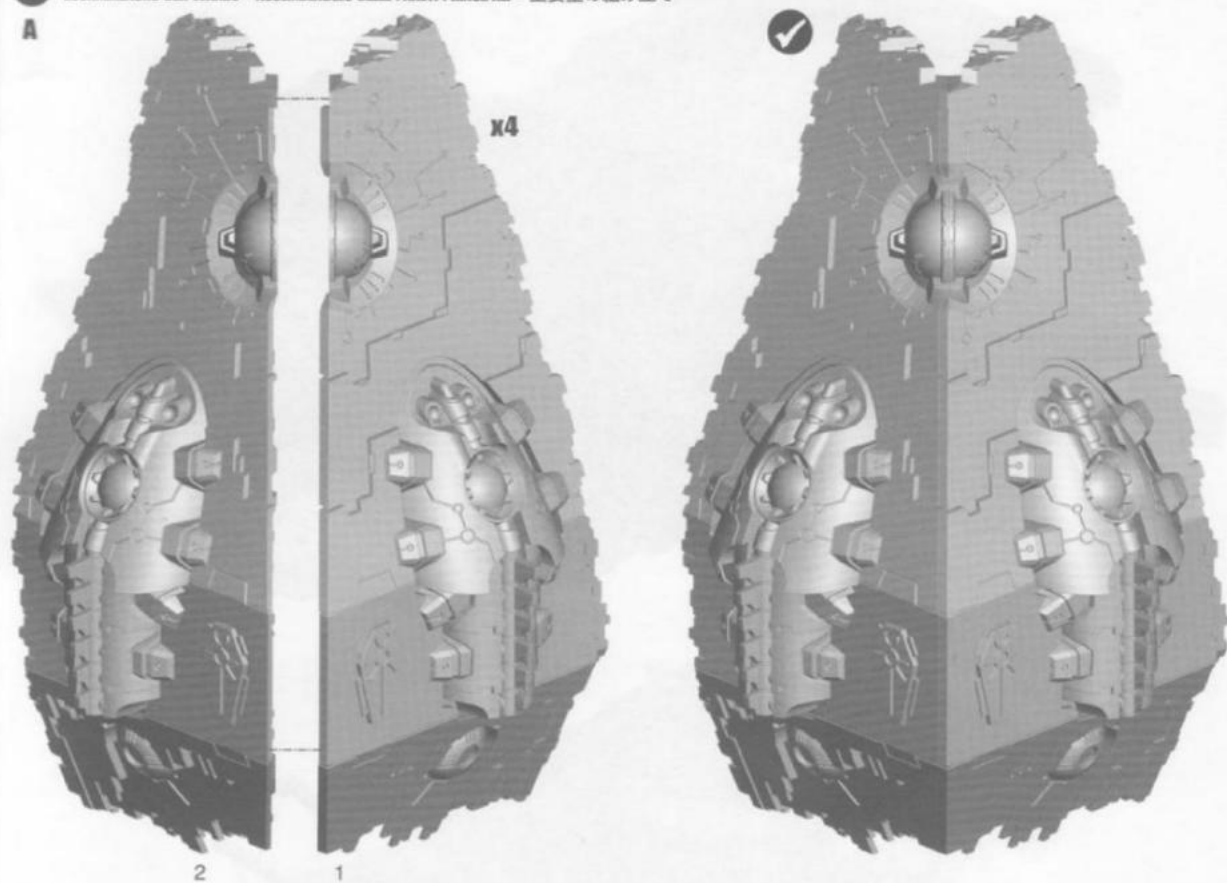


Do not glue
Ne pas coller
No pegar
Nicht kleben
Non incollare
接着しないこと

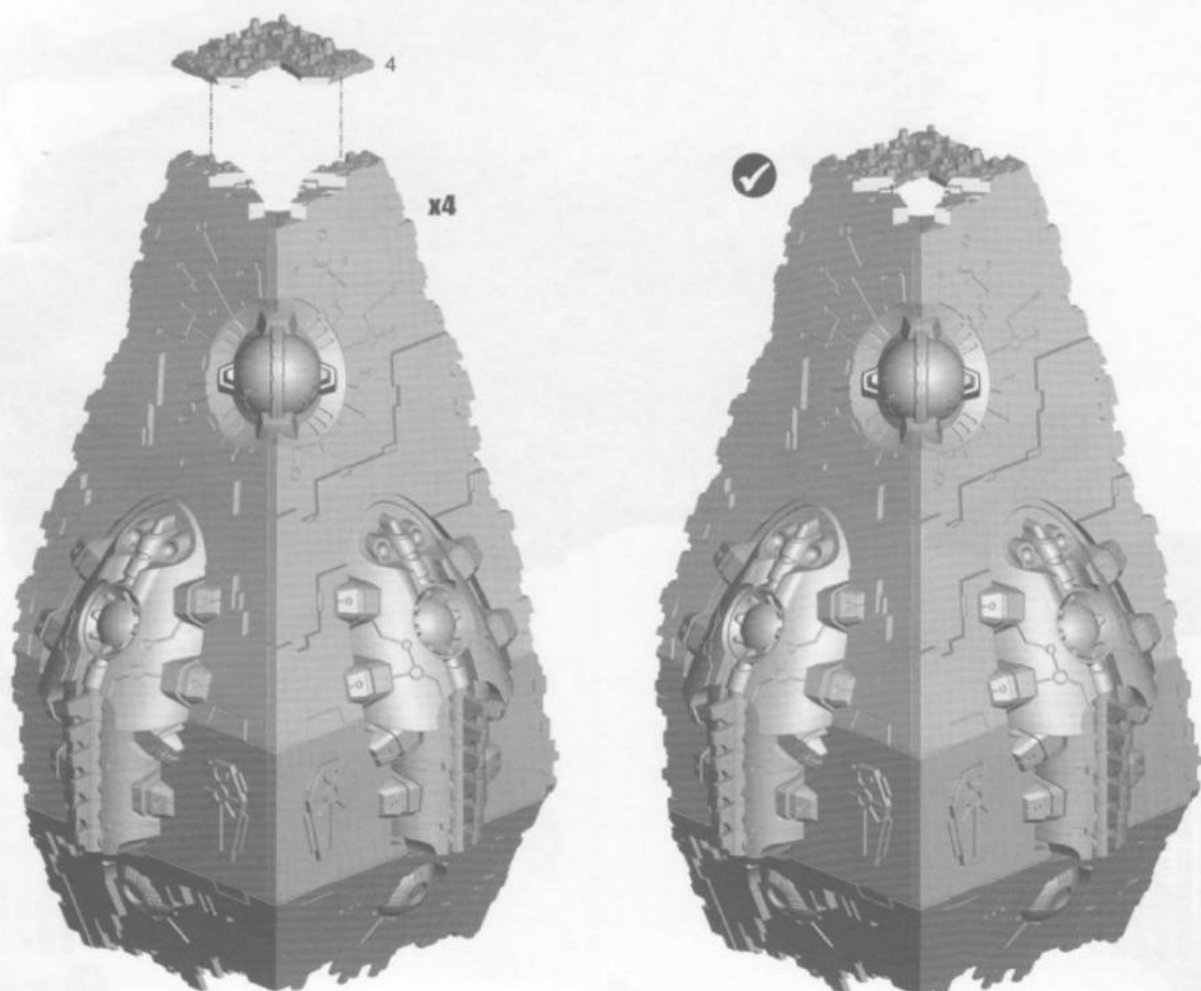




A

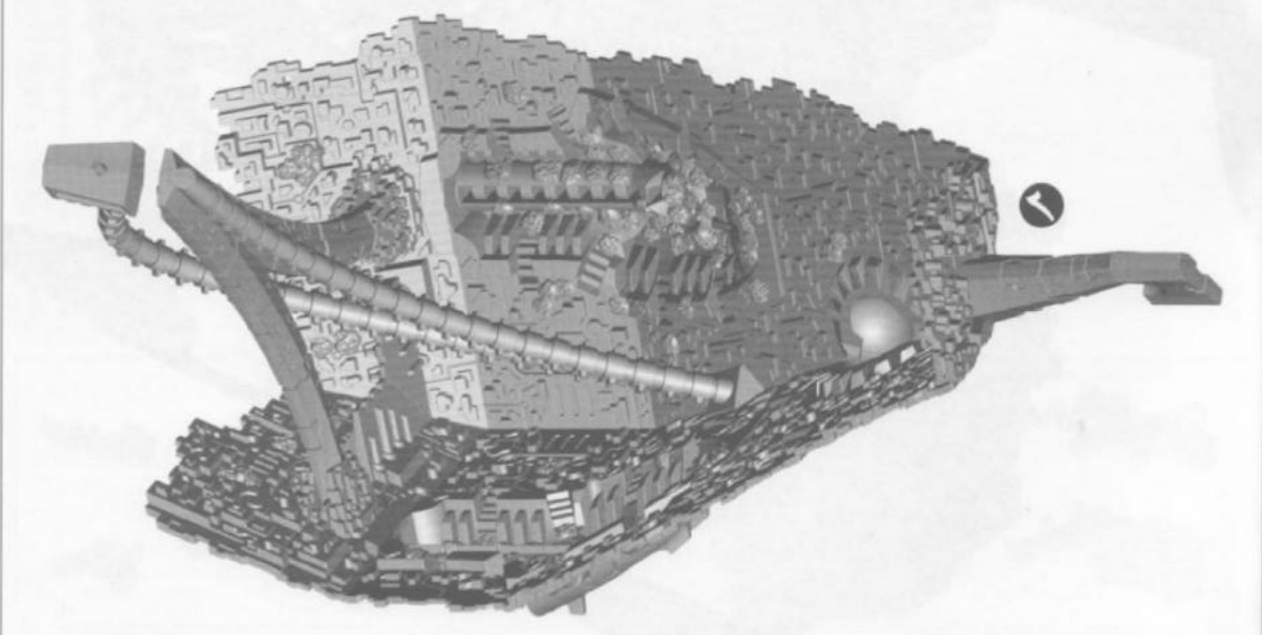
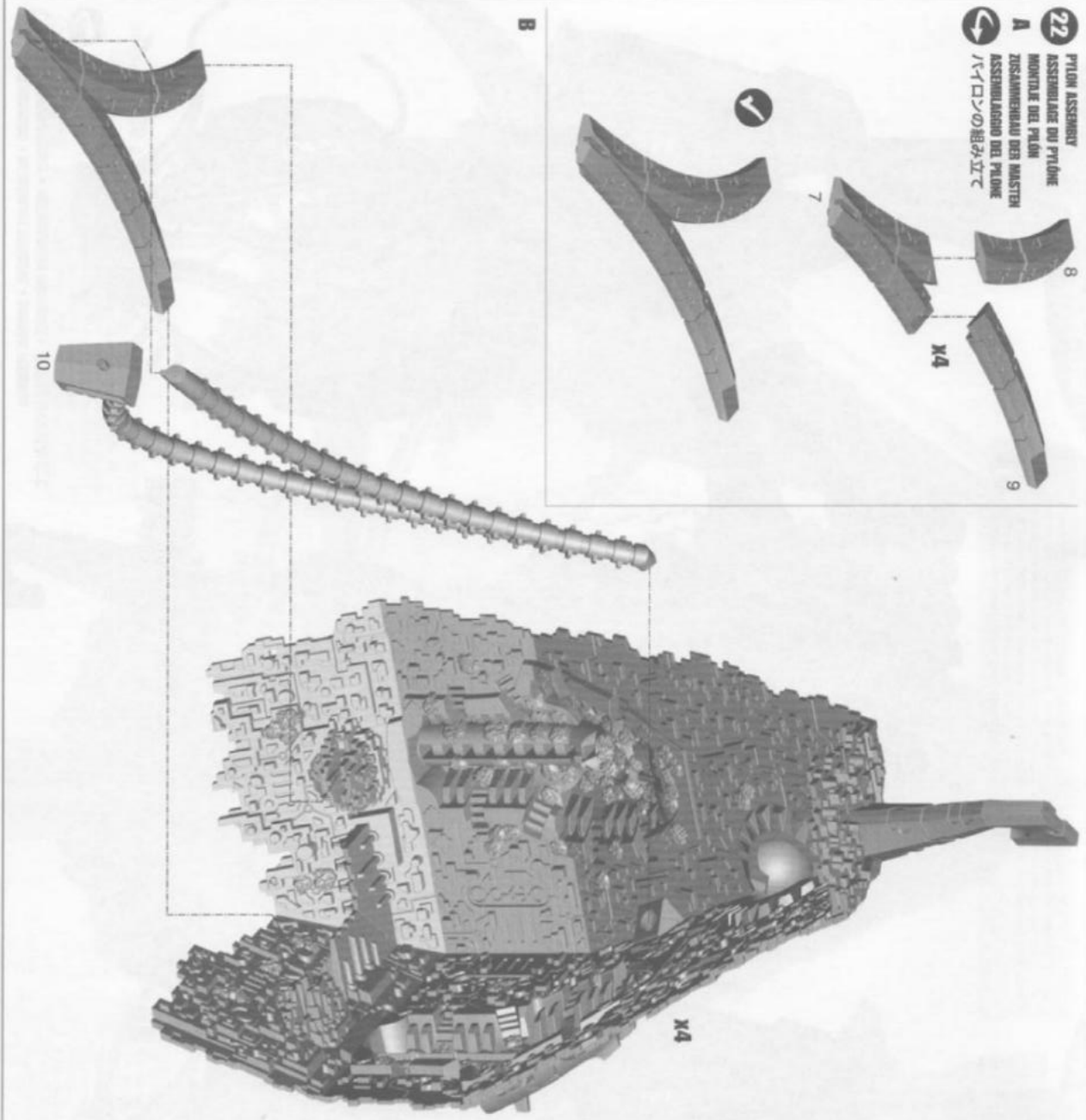
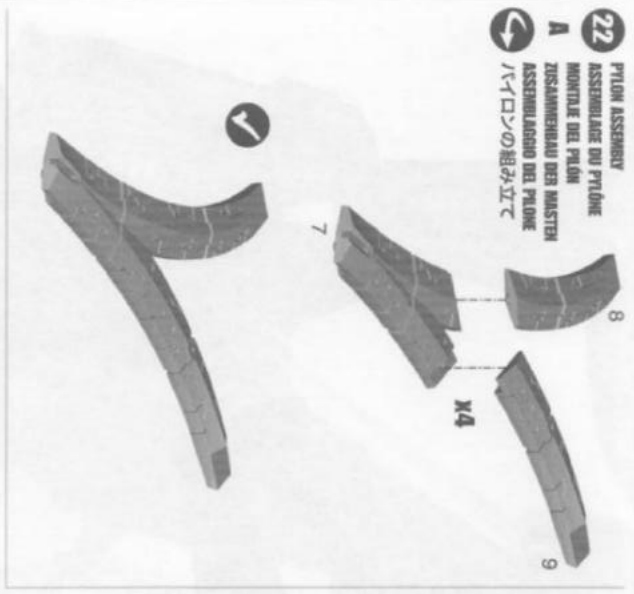


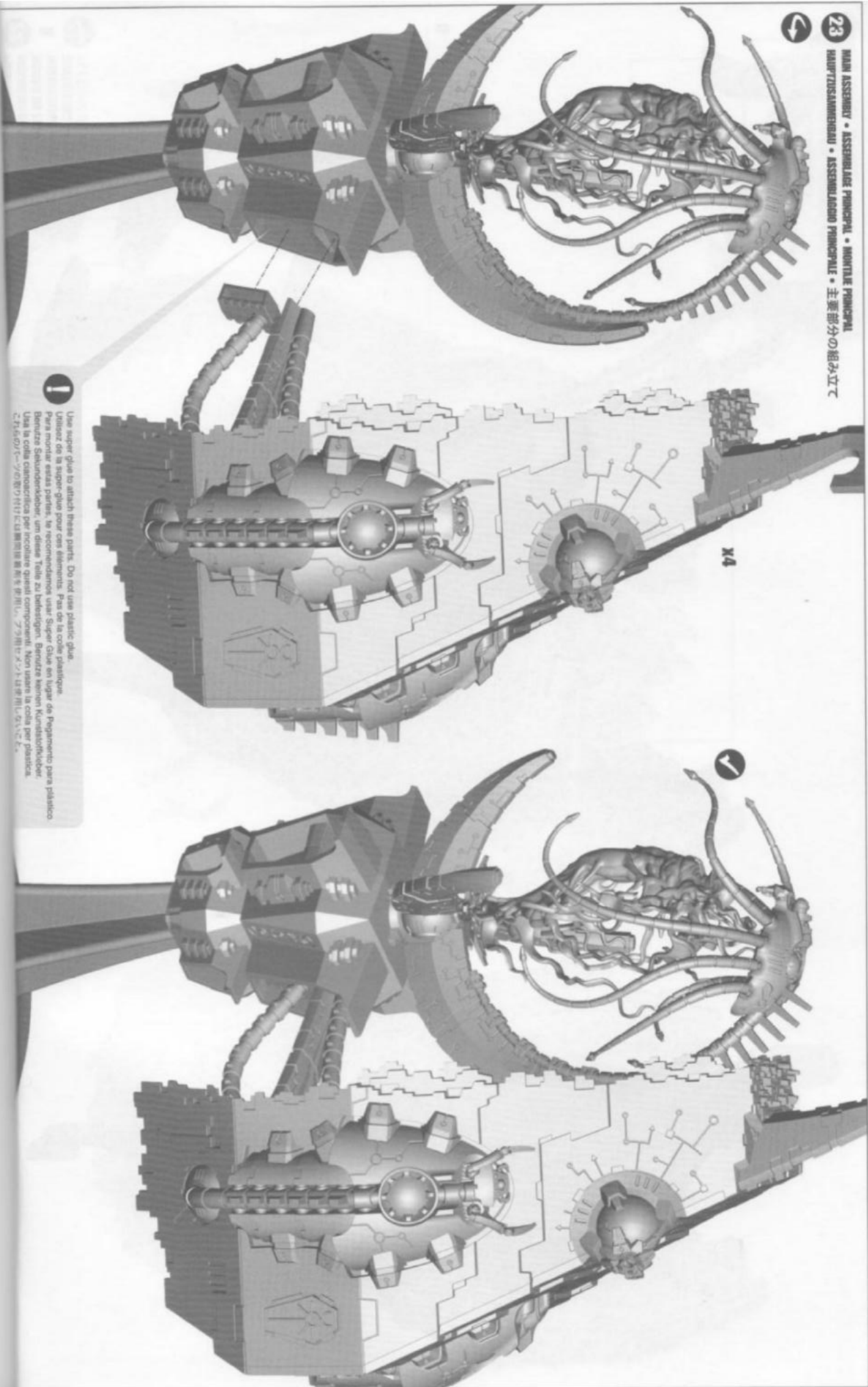
B



22 Pylon Assembly

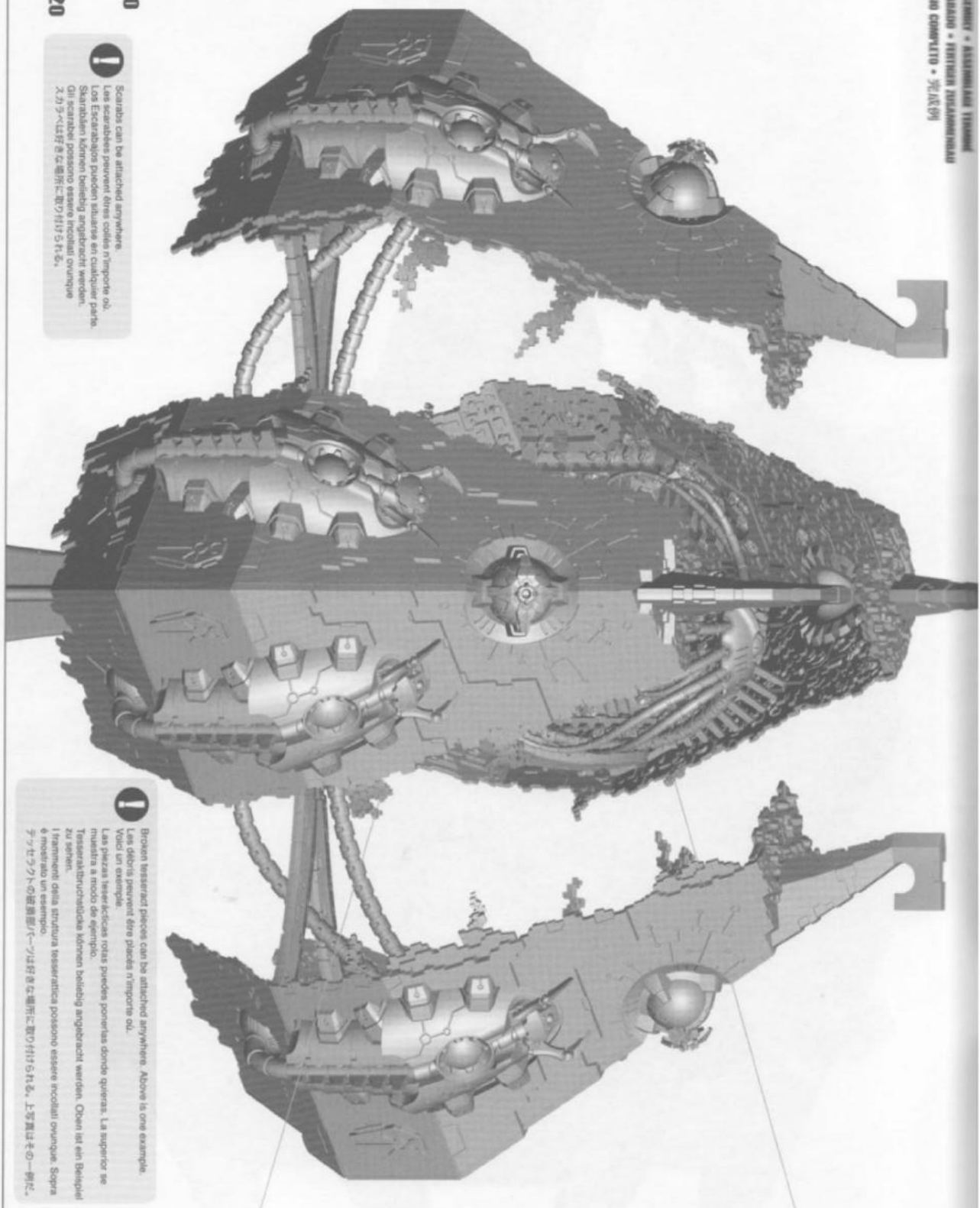
A MONTAGE DEL PILONE
ZUSAMMENBAU DES MASTEN
ASSEMBLAGGIO DEL PILONE
パイロンの組み立て





i

Use super glue to attach these parts. Do not use plastic glue.
Utilisez de la super-glu pour ces éléments. Pas de la colle plastique.
Para montar estas partes, se recomiendan usar Super Glue en lugar de Pegamento para plástico.
Benutze Sekundenkleber, um diese Teile zu befestigen. Benutze keinen Kunststoffkleber.
Usa la colla cianoacrilica per incollare questi componenti. Non usare la colla per plastica.
これらのパーツの取り付けには瞬間接着剤を使用し、プラスチック用接着剤は使用しないでください。



54  **K20**

53  **K20**

I Les scarabées peuvent être collés n'importe où. Los Escarabajos pueden adherirse en cualquier parte. Skarabäer können beliebig angebracht werden. Gli scarabei possono essere incollati ovunque. 2カ所へは好きな場所に貼り付けられる。

I Broken tesseraed pieces can be attached anywhere. Above is one example. Los dados resacaed de los piezas n'importe où. Voici un exemple. Las piezas tesseraedicas rolas puedes ponerlas donde quieras. La superior se muestra a modo de ejemplo. Tesseratbruchstücke können beliebig angebracht werden. Oben ist ein Beispiel zu sehen. I frammenti della struttura tesseraedica possono essere incollati ovunque. Sopra è mostrato un esempio. テッセラートの破断部パーツは好きな場所に貼り付けられる。上写真はその一例だ。

