



Free Downloads of Build Instructions,  
Assembly Booklets & How To Guides

**BuildInstructions.com**

# WARHAMMER AGE OF SIGMAR



## GROVE GUARDIAN

GARDIENNE DE LA SYLVE • GUARDIÁN DE LA ARBOLEDA  
HAINWÄCHTER • GUARDIANO DELLA SELVA  
グローヴ・ガーディアン • 林地守护者 • 그로브 수호자



READ THIS FIRST • À LIRE EN PRIORITÉ • LEE ESTO PRIMERO • BITTE BEACHT  
LEGGI PRIMA QUESTO • 最初にお読みください。• 请优先阅读 • 먼저 읽어주세요

**ENG** BEFORE ASSEMBLING YOUR MINIATURES, PLEASE READ THROUGH THE INSTRUCTIONS IN THIS BOOKLET CAREFULLY.

A pair of plastic cutters are required to remove the plastic components in this kit from their frame. We advise using a mouldline scraping tool to clean up the parts. To assemble your model you will need glue suitable for plastic models. We recommend you follow all instructions and warnings provided with any hobby accessories you purchase.

**FRE** AVANT D'ASSEMBLER VOS FIGURINES, VEUILLEZ LIRE ATTENTIVEMENT LES INSTRUCTIONS DE CE LIVRET.

Une pince coupante est requise pour retirer chaque élément de sa grappe plastique. Nous vous conseillons d'utiliser un ébarboir pour faire disparaître les lignes de moulage. Pour assembler votre figurine, vous aurez besoin d'une colle spéciale pour le plastique. Nous vous recommandons de suivre les instructions et de respecter les mises en garde fournies avec les outils que vous achetez.

**SPA** POR FAVOR, LEE CUIDADOSAMENTE ESTE LIBRETO DE INSTRUCCIONES ANTES DE EMPEZAR A MONTAR LAS MINIATURAS.

Te harán falta unas tenazas para plástico a fin de separar las piezas de la matriz. También aconsejamos una herramienta para rebabas a fin de limpiar cada pieza. Para montar la miniatura necesitarás pegamento para plástico. Recomendamos seguir las instrucciones y advertencias que figuren en los accesorios de hobby que vayas a emplear.

**GER** BEVOR DU DEINE MINIATUREN ZUSAMMENBAUST, BITTE LIES DIR DIE ANWEISUNGEN IN DIESEM BOOKLET SORGSAM DURCH.

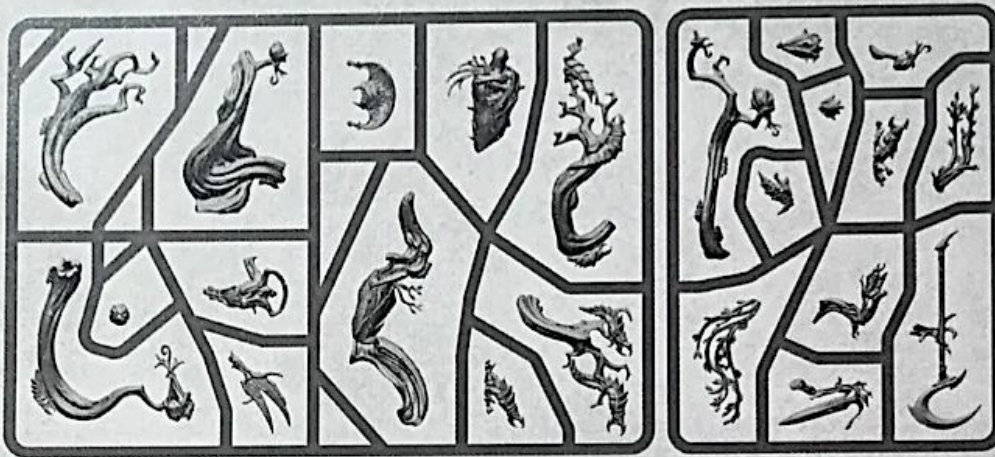
Du benötigst einen Kunststoffseitschneider, um die Kunststoffteile aus diesem Bausatz aus ihrem Gussrahmen zu trennen. Wir empfehlen, einen

**ITA** PRIMA DI ASSEMBLARE LE MINIATURE LEGGI CON ATTENZIONE LE ISTRUZIONI IN QUESTO LIBRETTO. Per rimuovere dallo sprue i componenti di plastica di questo kit è necessario un paio di tronchesine per plastica. Consigliamo l'utilizzo di un attrezzo per ripulire. Per assemblare il modello hai bisogno di colla idonea ai modelli di plastica. Consigliamo di seguire tutte le istruzioni e le avvertenze che accompagnano gli strumenti hobbistici acquistati.




**JAP** ミニチュアを組み立てる前に、この冊子の説明をよくお読みください。このキットのプラスチック部品をフレームから取り外すには、プラスチック用カッターが必要です。パーツの表面を整えるには、モールドライン・スクレイピングツールを使用することをお勧めします。組み立てにはプラスチックミニチュア用の接着剤が必要です。購入したホビー用品に記載されているすべての指示と警告に従うことをお勧めします。

**CHI** 在组装您的微缩模型之前, 请仔细阅读本手册中的说明。您需要塑料剪钳才能从框架中取出板件中的塑料部件。我们建议使用合模线刮刀来清理零件。要组装您的模型, 您还需要适合塑料模型的胶水。我们建议您遵循模型所附的所有说明和警告。

**KOR** 미니어처 조립 전 이 가이드의 설명을 상세히 읽어주세요. 본 키트의 플라스틱 부품을 스프루에서 떼어내려면 플라스틱용 니퍼가 필요합니다. 부품은

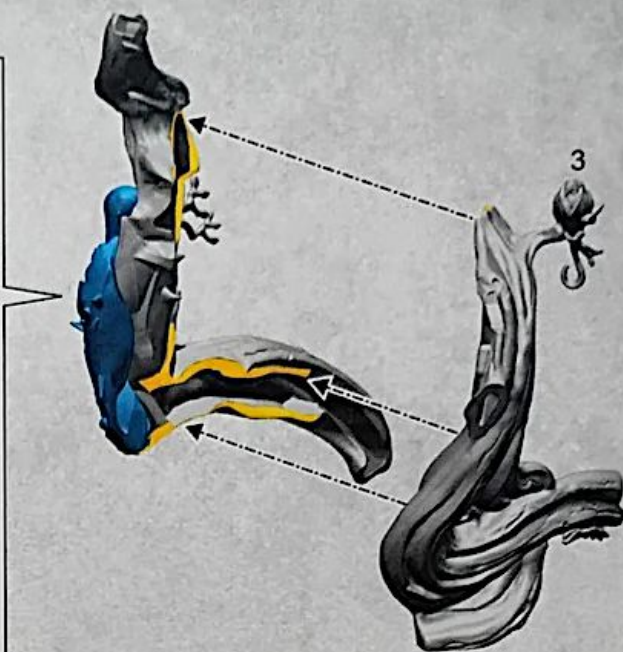
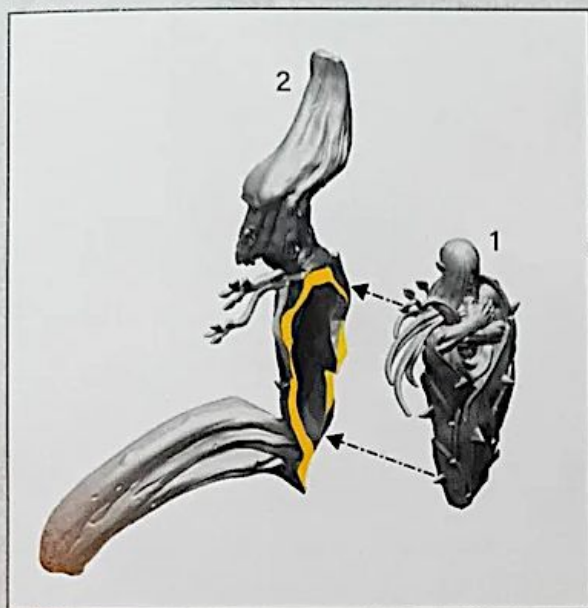


**EXPLANATION OF SYMBOLS • EXPLICATION DES SYMBOLES • EXPLICACIÓN DE SÍMBOLOS  
ERLÄUTERUNG DER SYMBOLE • LEGENDA DEI SIMBOLI • アイコン解説 • 符号说明 • 기호 설명**

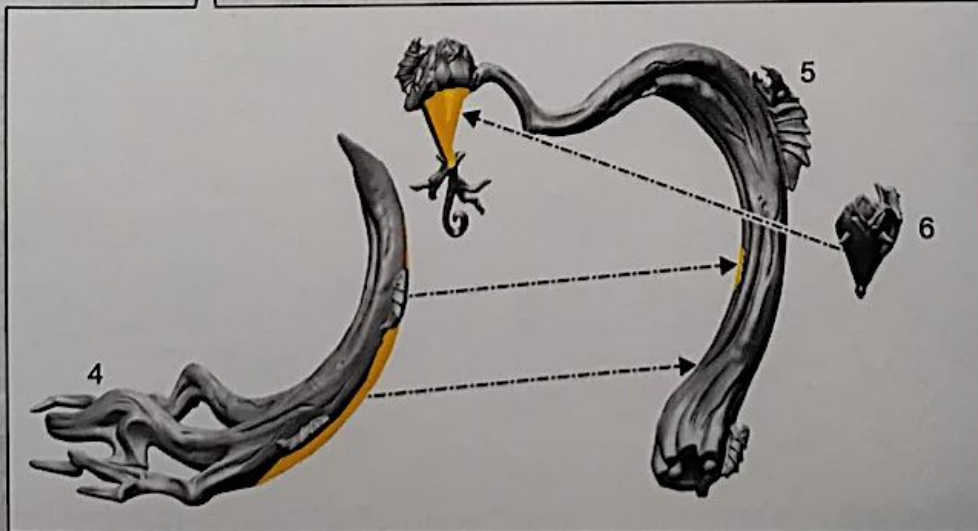
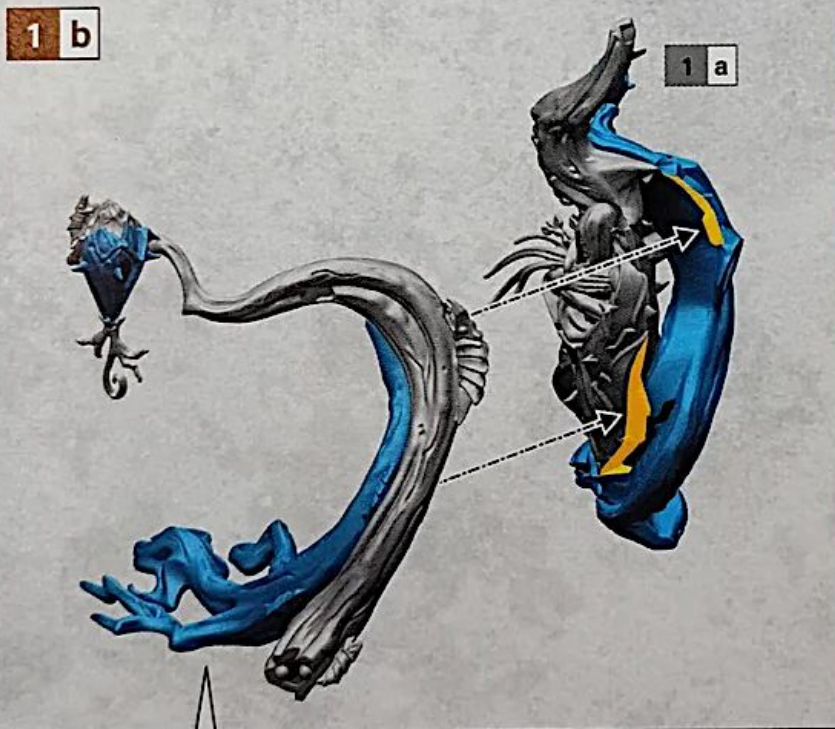
- |                                                                                                                                                                                                                                         |                                                                                                                                                                                                                                                                                                                               |                                                                                                                                                                                                                                    |
|-----------------------------------------------------------------------------------------------------------------------------------------------------------------------------------------------------------------------------------------|-------------------------------------------------------------------------------------------------------------------------------------------------------------------------------------------------------------------------------------------------------------------------------------------------------------------------------|------------------------------------------------------------------------------------------------------------------------------------------------------------------------------------------------------------------------------------|
|  <ul style="list-style-type: none"> <li>• Variant • Variante</li> <li>• Variante • Variante</li> <li>• Variante • 바リエ이션</li> <li>• 可选方案 • 옵션</li> </ul> |  <ul style="list-style-type: none"> <li>• Interchangeable Parts • Éléments interchangeables</li> <li>• Partes intercambiables • Austauschbare Teile</li> <li>• Componenti intercambiabili</li> <li>• 組み換え可能な部品 • 可互换零件 • 선택 가능 부품</li> </ul> |  <ul style="list-style-type: none"> <li>• Complete • Terminé</li> <li>• Terminado • Fertig</li> <li>• Finito • 完成</li> <li>• 完成 • 완성</li> </ul> |
|-----------------------------------------------------------------------------------------------------------------------------------------------------------------------------------------------------------------------------------------|-------------------------------------------------------------------------------------------------------------------------------------------------------------------------------------------------------------------------------------------------------------------------------------------------------------------------------|------------------------------------------------------------------------------------------------------------------------------------------------------------------------------------------------------------------------------------|



1 a



1 b



1 c



8

1 b

7

10



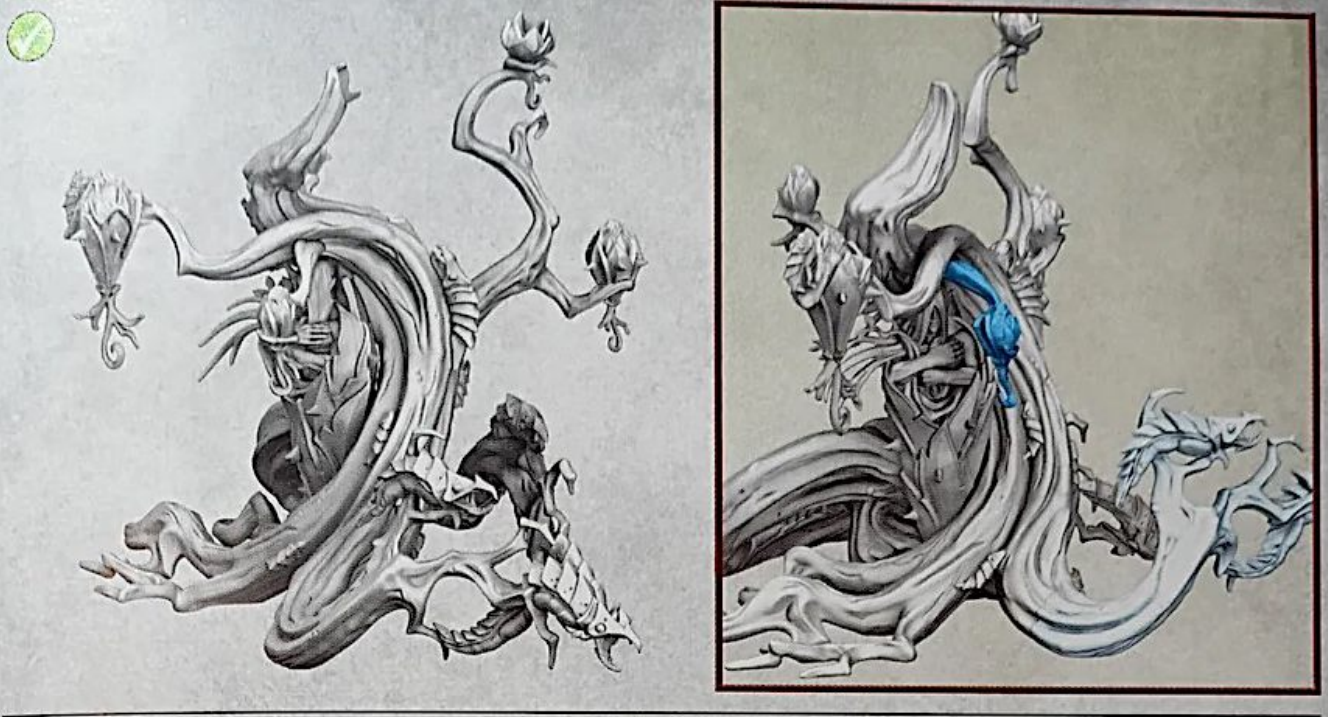
1 d

1 c

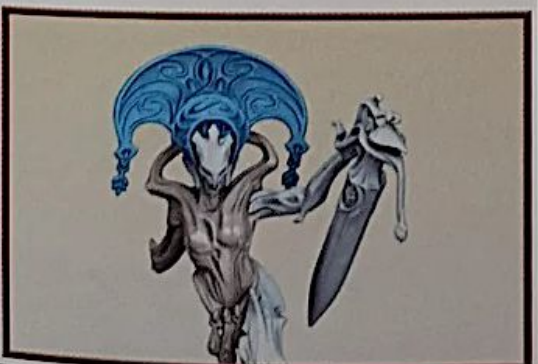
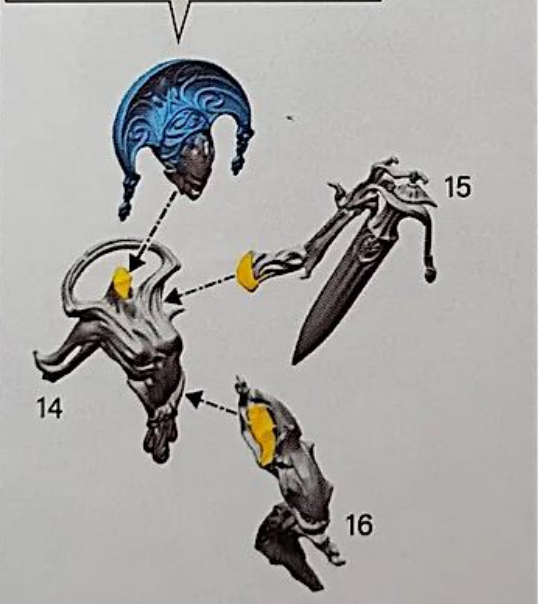
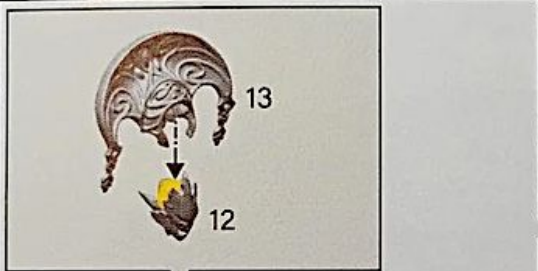
11

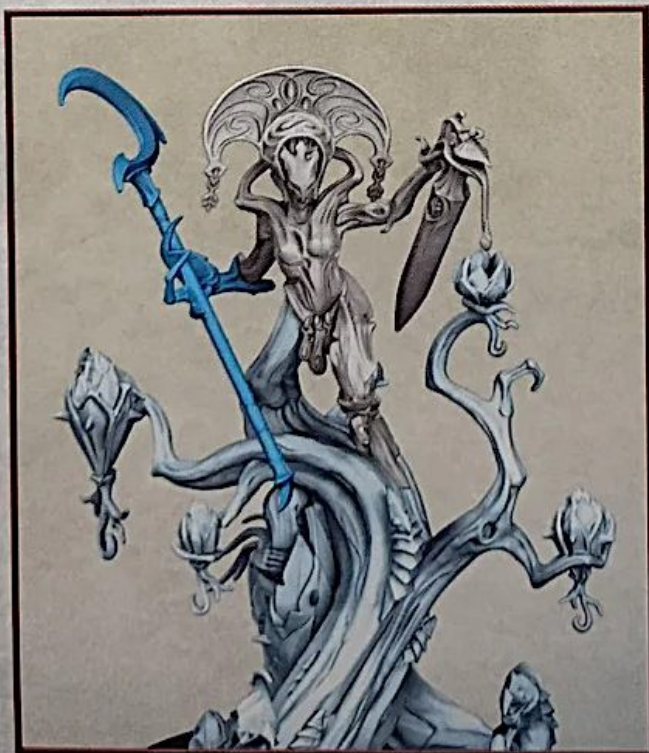


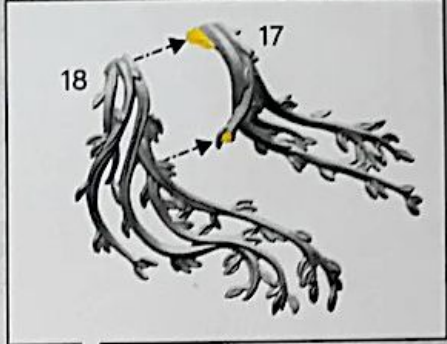
9



2 a







2 b

