



Free Downloads of Build Instructions,
Assembly Booklets & How To Guides

BuildInstructions.com

WARHAMMERTM

THE OLD WORLD

WARRIORS OF CHAOS
GIGANTIC SPAWN OF CHAOS



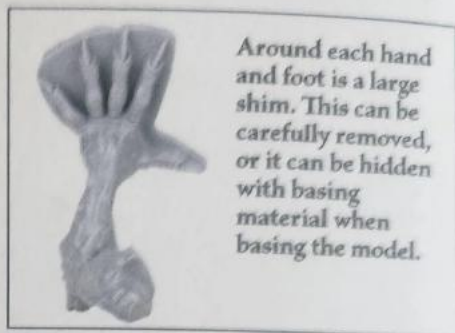
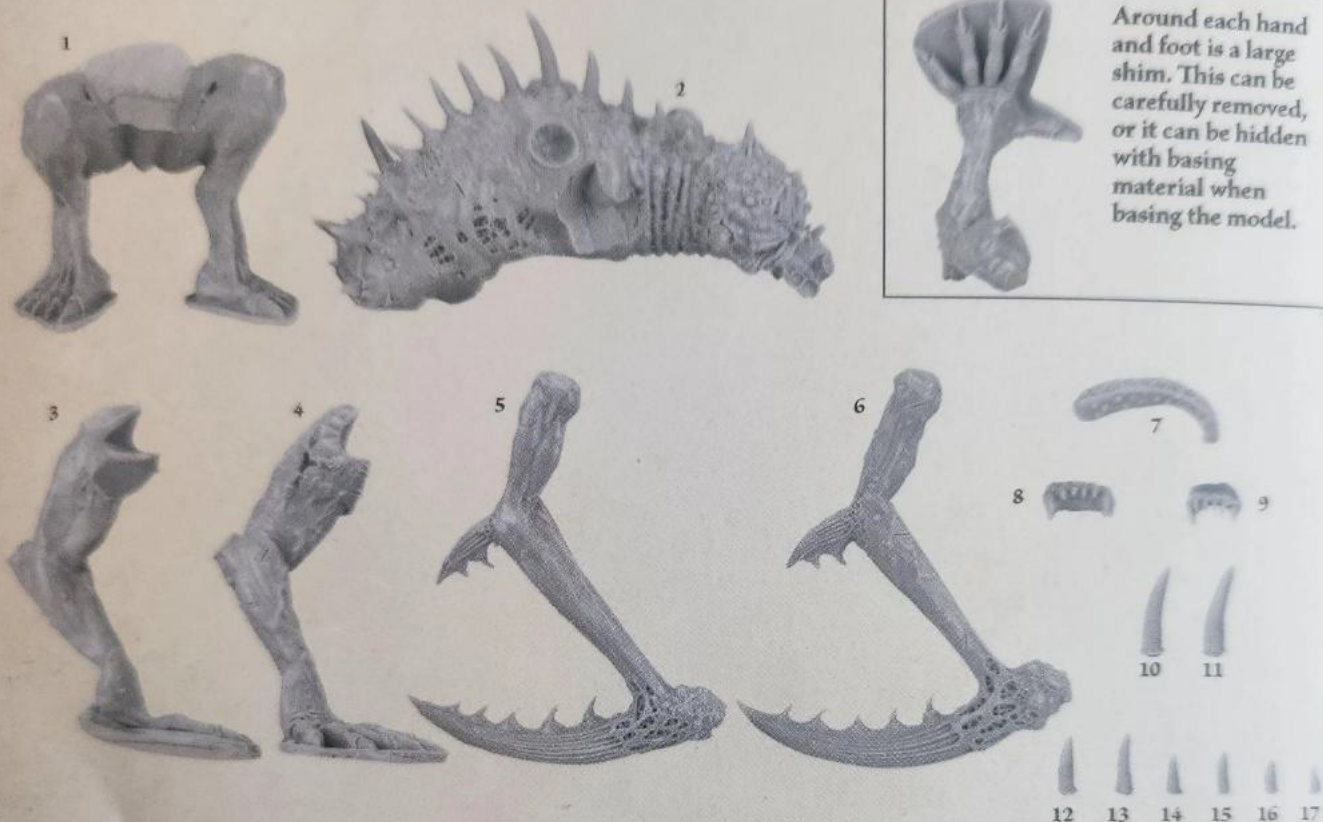
Components

1. Legs
2. Torso
3. Left Arm
4. Right Arm
5. Left Claw
6. Right Claw

7. Tongue
8. Upper Jaw Right
9. Upper Jaw Left
10. Left Elbow Spine
11. Right Elbow Spine
12. Tooth 1

13. Tooth 2
14. Tooth 3
15. Tooth 4
16. Tooth 5
17. Tooth 6

Before assembling the model, wash each part thoroughly with an abrasive brush, such as a toothbrush, to remove any model release agent that may still be on the surface of the parts. Then, remove any excess resin such as mould lines, casting gates, vents and shims. For a more detailed guide to working with resin models, go to the Downloads section of the Warhammer Community website. To glue the resin pieces together, use super glue.



3



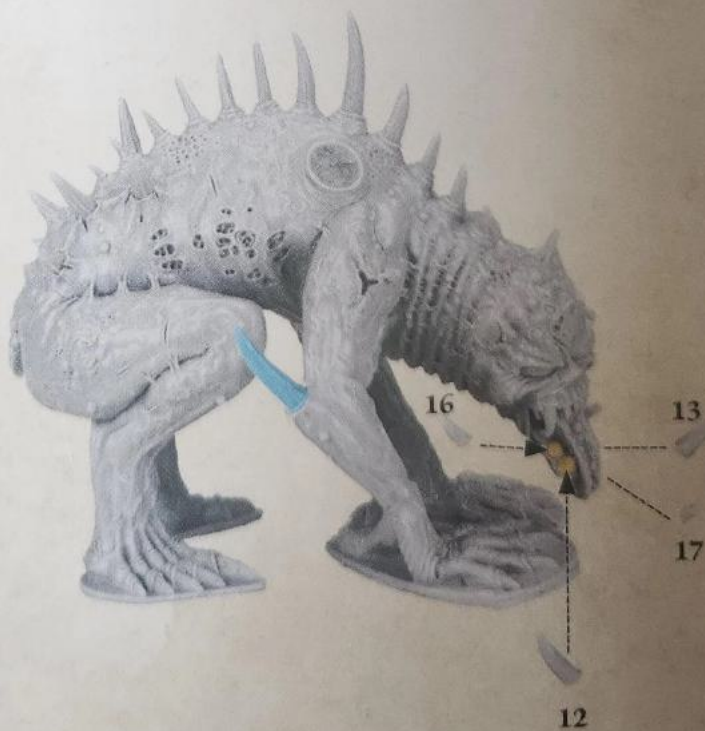
4



5



6





© Copyright Games Workshop Limited 2024.
 Warhammer: the Old World, Citadel, Forge World, Games Workshop, GW, Warhammer, the 'winged-hammer'
 Warhammer logo, and all associated logos, names, races, vehicles, weapons and characters are either
 ® or TM, and/or © Games Workshop Limited. All Rights Reserved.

